

CARM1/PRMT4 Antibody

Catalog No: #43100

Orders: order@signalwayantibody.comSupport: tech@signalwayantibody.com

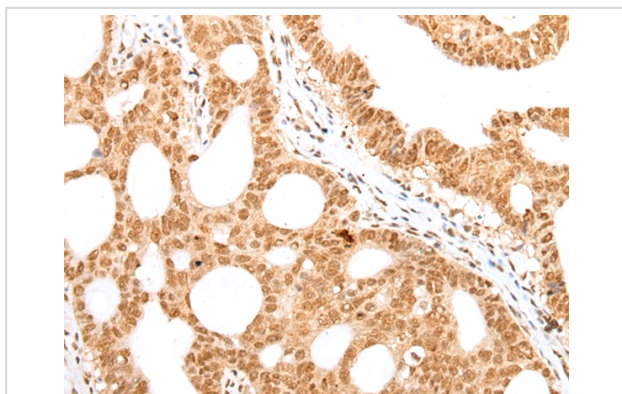
Description

Product Name	CARM1/PRMT4 Antibody
Host Species	Rabbit
Clonality	Polyclonal
Purification	Antigen affinity purification.
Applications	IHC
Species Reactivity	Hu Ms Rt
Specificity	The antibody detects endogenous levels of total CARM1/PRMT4 protein.
Immunogen Type	peptide
Immunogen Description	Synthetic peptide of human CARM1/PRMT4
Target Name	CARM1/PRMT4
Other Names	PRMT4
Accession No.	Swiss-Prot#: Q86X55Gene ID: 10498
Uniprot	Q86X55
GeneID	10498;
Concentration	0.6mg/ml
Formulation	Rabbit IgG in pH7.4 PBS, 0.05% NaN ₃ , 40% Glycerol.
Storage	Store at -20°C

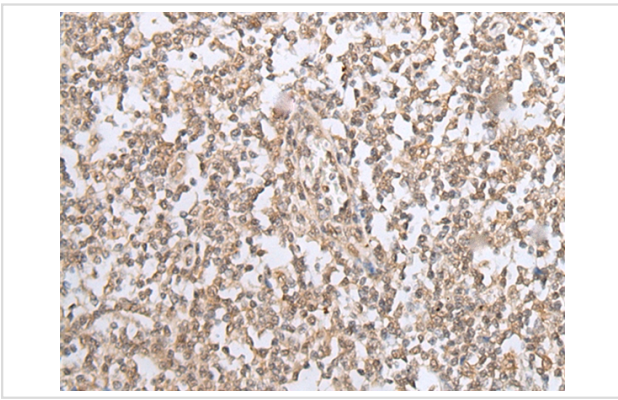
Application Details

Immunohistochemistry: 1:25-1:100

Images



Immunohistochemical analysis of paraffin-embedded Human gastric cancer tissue using #43100 at dilution 1/20.



Immunohistochemical analysis of paraffin-embedded Human tonsil tissue using #43100 at dilution 1/20.

Background

This gene belongs to the protein arginine methyltransferase (PRMT) family. The encoded enzyme catalyzes the methylation of guanidino nitrogens of arginyl residues of proteins. The enzyme acts specifically on histones and other chromatin-associated proteins and is involved in regulation of gene expression. The enzyme may act in association with other proteins or within multi-protein complexes and may play a role in cell type-specific functions and cell lineage specification. A related pseudogene is located on chromosome 9.

Note: This product is for in vitro research use only