

PINK1 Antibody

Catalog No: #43104

Orders: order@signalwayantibody.comSupport: tech@signalwayantibody.com

Description

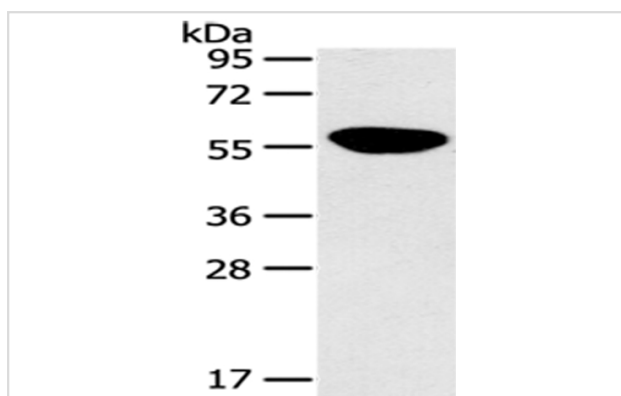
Product Name	PINK1 Antibody
Host Species	Rabbit
Clonality	Polyclonal
Purification	Antigen affinity purification.
Applications	WB IHC
Species Reactivity	Hu Ms
Specificity	The antibody detects endogenous levels of total PINK1 protein.
Immunogen Description	Synthetic peptide of human PINK1
Target Name	PINK1
Other Names	BRPK; PARK6
Accession No.	Swiss-Prot#: Q9BXM7 Gene ID: 65018
Uniprot	Q9BXM7
GeneID	65018;
Calculated MW	63kd
Concentration	1mg/ml
Formulation	Rabbit IgG in pH7.4 PBS, 0.05% NaN ₃ , 40% Glycerol.
Storage	Store at -20°C

Application Details

Western blotting: 1:500-1:2000

Immunohistochemistry: 1:25-1:100

Images



Gel: 10%SDS-PAGE
 Lysate: 40 µg
 Lane: Human fetal brain tissue
 Primary antibody: 1/125 dilution
 Secondary antibody: Goat anti rabbit IgG at 1/8000 dilution
 Exposure time: 10 seconds

Background

This gene encodes a serine/threonine protein kinase that localizes to mitochondria. It is thought to protect cells from stress-induced mitochondrial dysfunction. Mutations in this gene cause one form of autosomal recessive early-onset Parkinson disease.

Note: This product is for in vitro research use only