

RERE Antibody

Catalog No: #43107

Orders: order@signalwayantibody.comSupport: tech@signalwayantibody.com

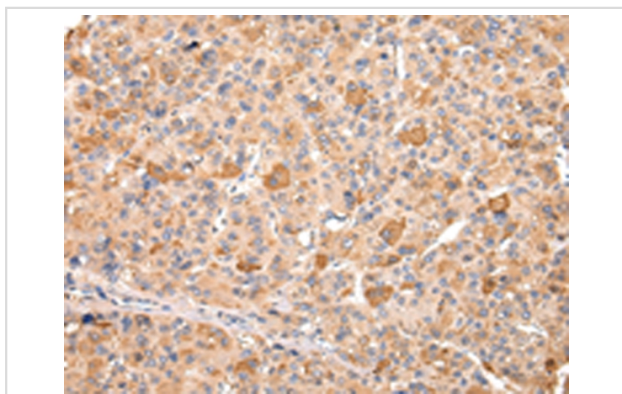
Description

Product Name	RERE Antibody
Host Species	Rabbit
Clonality	Polyclonal
Purification	Antigen affinity purification.
Applications	IHC
Species Reactivity	Hu Ms Rt
Specificity	The antibody detects endogenous levels of total RERE protein.
Immunogen Type	peptide
Immunogen Description	Synthetic peptide of human RERE
Target Name	RERE
Other Names	ARG; ARP; DNB1; ATN1L
Accession No.	Swiss-Prot#: Q9P2R6 Gene ID: 473
Uniprot	Q9P2R6
GeneID	473;
Concentration	1.4mg/ml
Formulation	Rabbit IgG in pH7.4 PBS, 0.05% NaN ₃ , 40% Glycerol.
Storage	Store at -20°C

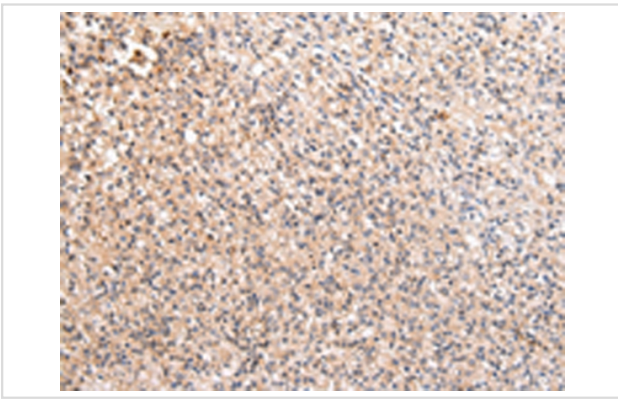
Application Details

Immunohistochemistry: 1:30-1:150

Images



Immunohistochemical analysis of paraffin-embedded Human liver cancer tissue using #43107 at dilution 1/20.



Immunohistochemical analysis of paraffin-embedded Human prostate cancer tissue using #43107 at dilution 1/20.

Background

This gene encodes a member of the atrophin family of arginine-glutamic acid (RE) dipeptide repeat-containing proteins. The encoded protein co-localizes with a transcription factor in the nucleus, and its overexpression triggers apoptosis. A similar protein in mouse associates with histone deacetylase and is thought to function as a transcriptional co-repressor during embryonic development. Multiple transcript variants encoding different isoforms have been found for this gene.

Note: This product is for in vitro research use only