

## ABCA10 Antibody

Catalog No: #43112

Orders: [order@signalwayantibody.com](mailto:order@signalwayantibody.com)Support: [tech@signalwayantibody.com](mailto:tech@signalwayantibody.com)

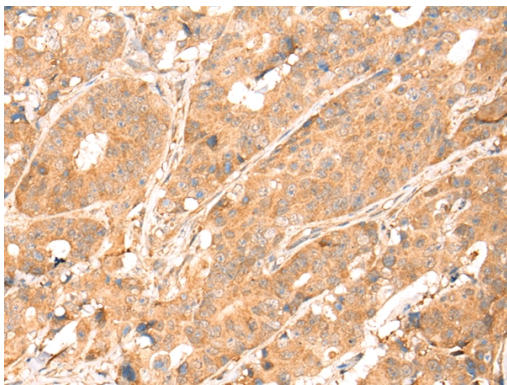
## Description

Product Name	ABCA10 Antibody
Host Species	Rabbit
Clonality	Polyclonal
Purification	Antigen affinity purification.
Applications	IHC
Species Reactivity	Hu
Specificity	The antibody detects endogenous levels of total ABCA10 protein.
Immunogen Type	peptide
Immunogen Description	Synthetic peptide of human ABCA10
Target Name	ABCA10
Other Names	EST698739
Accession No.	Swiss-Prot#: Q8WWZ4 Gene ID: 10349
Uniprot	Q8WWZ4
GeneID	10349;
Concentration	1.4mg/ml
Formulation	Rabbit IgG in pH7.4 PBS, 0.05% NaN <sub>3</sub> , 40% Glycerol.
Storage	Store at -20°C

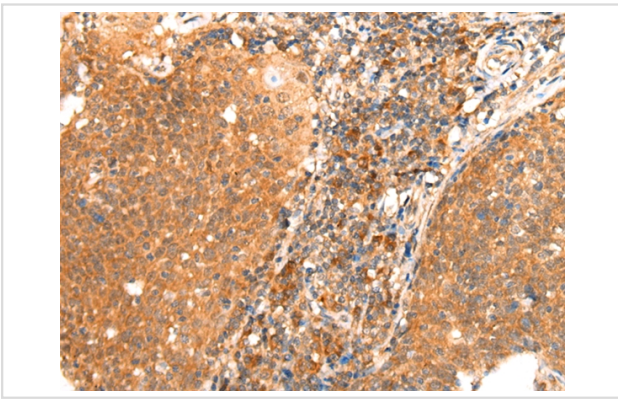
## Application Details

Immunohistochemistry: 1:25-1:100

## Images



Immunohistochemical analysis of paraffin-embedded Human colorectal cancer tissue using #43112 at dilution 1/25.



Immunohistochemical analysis of paraffin-embedded Human cervical cancer tissue using #43112 at dilution 1/25.

## Background

The membrane-associated protein encoded by this gene is a member of the superfamily of ATP-binding cassette (ABC) transporters. ABC proteins transport various molecules across extra- and intracellular membranes. ABC genes are divided into seven distinct subfamilies (ABC1, MDR/TAP, MRP, ALD, OABP, GCN20, and White). This encoded protein is a member of the ABC1 subfamily. Members of the ABC1 subfamily comprise the only major ABC subfamily found exclusively in multicellular eukaryotes. This gene is clustered among 4 other ABC1 family members on 17q24, but neither the substrate nor the function of this gene is known.

Note: This product is for in vitro research use only