

ADORA1 Antibody

Catalog No: #43117

Orders: order@signalwayantibody.comSupport: tech@signalwayantibody.com

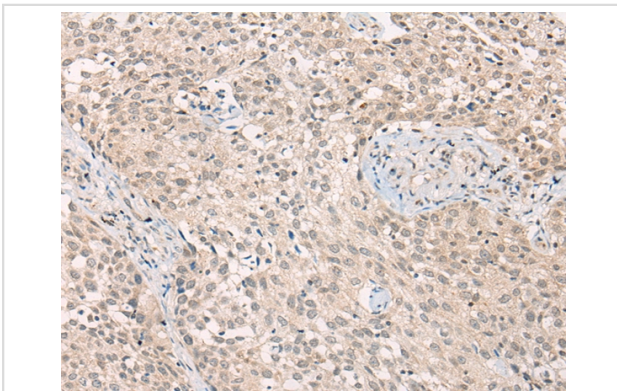
Description

Product Name	ADORA1 Antibody
Host Species	Rabbit
Clonality	Polyclonal
Purification	Antigen affinity purification.
Applications	IHC
Species Reactivity	Hu
Specificity	The antibody detects endogenous levels of total ADORA1 protein.
Immunogen Type	peptide
Immunogen Description	Synthetic peptide of human ADORA1
Target Name	ADORA1
Other Names	RDC7
Accession No.	Swiss-Prot#: P30542Gene ID: 134
Uniprot	P30542
GeneID	134;
Concentration	0.9mg/ml
Formulation	Rabbit IgG in pH7.4 PBS, 0.05% NaN ₃ , 40% Glycerol.
Storage	Store at -20°C

Application Details

Immunohistochemistry: 1:30-1:150

Images



Immunohistochemical analysis of paraffin-embedded Human lung cancer tissue using #43117 at dilution 1/20,

Background

The protein encoded by this gene is an adenosine receptor that belongs to the G-protein coupled receptor 1 family. There are 3 types of adenosine receptors, each with a specific pattern of ligand binding and tissue distribution, and together they regulate a diverse set of physiologic functions. The type A1 receptors inhibit adenylyl cyclase, and play a role in the fertilization process. Animal studies also suggest a role for A1 receptors in kidney function and ethanol intoxication. Transcript variants with alternative splicing in the 5' UTR have been found for this gene.

Note: This product is for in vitro research use only