

ARID2 Antibody

Catalog No: #43119

Orders: order@signalwayantibody.com

Support: tech@signalwayantibody.com

Description

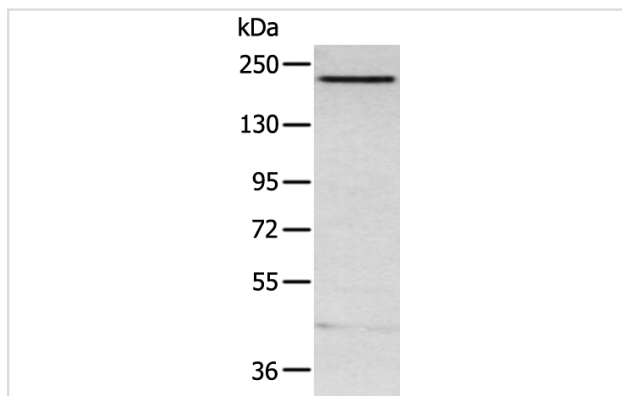
| | |
|-----------------------|---|
| Product Name | ARID2 Antibody |
| Host Species | Rabbit |
| Clonality | Polyclonal |
| Purification | Antigen affinity purification. |
| Applications | WB |
| Species Reactivity | Hu Ms |
| Specificity | The antibody detects endogenous levels of total ARID2 protein. |
| Immunogen Type | peptide |
| Immunogen Description | Synthetic peptide of human ARID2 |
| Target Name | ARID2 |
| Other Names | p200; BAF200 |
| Accession No. | Swiss-Prot#: Q68CP9Gene ID: 196528 |
| Uniprot | Q68CP9 |
| GeneID | 196528; |
| Calculated MW | 197kd |
| Concentration | 0.6mg/ml |
| Formulation | Rabbit IgG in pH7.4 PBS, 0.05% NaN ₃ , 40% Glycerol. |
| Storage | Store at -20°C |

Application Details

Western blotting: 1:200-1:1000

Immunohistochemistry: 1:25-1:100

Images



Gel: 6%SDS-PAGE
Lysate: 40 µg
Lane: TM4 cell
Primary antibody: 1/200 dilution
Secondary antibody: Goat anti rabbit IgG at 1/8000 dilution
Exposure time: 10 seconds

Background

ARID2 is a subunit of the PBAF chromatin-remodeling complex (see BAF180; MIM 606083), which facilitates ligand-dependent transcriptional

activation by nuclear receptors. Involved in transcriptional activation and repression of select genes by chromatin remodeling (alteration of DNA-nucleosome topology). Required for the stability of the SWI/SNF chromatin remodeling complex SWI/SNF-B (PBAF).

Note: This product is for in vitro research use only