

## HTRA1 Antibody

Catalog No: #43120

Orders: order@signalwayantibody.com

Support: tech@signalwayantibody.com

## Description

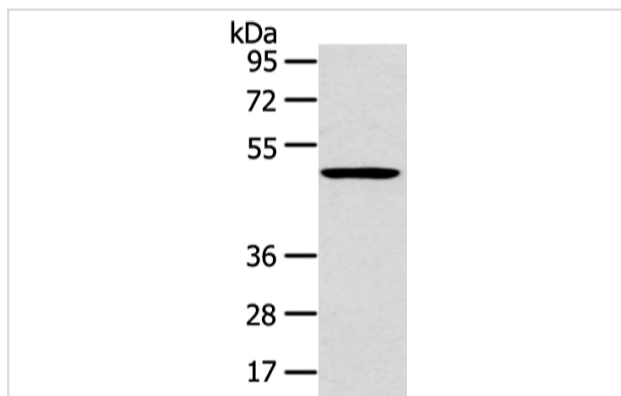
Product Name	HTRA1 Antibody
Host Species	Rabbit
Clonality	Polyclonal
Purification	Antigen affinity purification.
Applications	WB
Species Reactivity	Hu
Specificity	The antibody detects endogenous levels of total HTRA1 protein.
Immunogen Type	peptide
Immunogen Description	Synthetic peptide of human HTRA1
Target Name	HTRA1
Other Names	L56; HtrA; ARMD7; ORF480; PRSS11; CARASIL
Accession No.	Swiss-Prot#: Q92743 Gene ID: 5654
Uniprot	Q92743
GeneID	5654;
Calculated MW	51kd
Concentration	2.3mg/ml
Formulation	Rabbit IgG in pH7.4 PBS, 0.05% NaN <sub>3</sub> , 40% Glycerol.
Storage	Store at -20°C

## Application Details

Western blotting: 1:500-1:2000

Immunohistochemistry: 1:25-1:100

## Images



Gel: 8%SDS-PAGE  
Lysate: 40 µg  
Lane: 231 cell  
Primary antibody: 1/500 dilution  
Secondary antibody: Goat anti rabbit IgG at 1/8000 dilution  
Exposure time: 1 minute

## Background

This gene encodes a member of the trypsin family of serine proteases. This protein is a secreted enzyme that is proposed to regulate the availability of

insulin-like growth factors (IGFs) by cleaving IGF-binding proteins. It has also been suggested to be a regulator of cell growth. Variations in the promoter region of this gene are the cause of susceptibility to age-related macular degeneration type 7.

---

Note: This product is for in vitro research use only