

HIRA Antibody

Catalog No: #43121

Orders: order@signalwayantibody.comSupport: tech@signalwayantibody.com

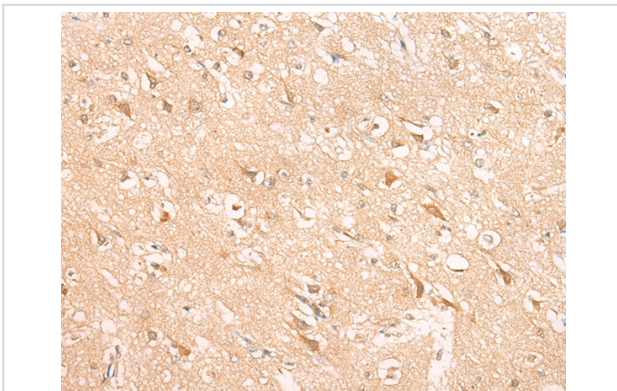
Description

Product Name	HIRA Antibody
Host Species	Rabbit
Clonality	Polyclonal
Purification	Antigen affinity purification.
Applications	IHC
Species Reactivity	Hu Ms
Specificity	The antibody detects endogenous levels of total HIRA protein.
Immunogen Type	peptide
Immunogen Description	Synthetic peptide of human HIRA
Target Name	HIRA
Other Names	TUP1; DGCR1; TUPLE1
Accession No.	Swiss-Prot#: P54198 Gene ID: 7290
Uniprot	P54198
GeneID	7290;
Concentration	1.4mg/ml
Formulation	Rabbit IgG in pH7.4 PBS, 0.05% NaN ₃ , 40% Glycerol.
Storage	Store at -20°C

Application Details

Immunohistochemistry: 1:25-1:100

Images



Immunohistochemical analysis of paraffin-embedded Human brain tissue using #43121 at dilution 1/25,

Background

This gene encodes a histone chaperone that preferentially places the variant histone H3.3 in nucleosomes. Orthologs of this gene in yeast, flies, and plants are necessary for the formation of transcriptionally silent heterochromatin. This gene plays an important role in the formation of the senescence-associated heterochromatin foci. These foci likely mediate the irreversible cell cycle changes that occur in senescent cells. It is considered the primary candidate gene in some haploinsufficiency syndromes such as DiGeorge syndrome, and insufficient production of the gene

may disrupt normal embryonic development.

Note: This product is for in vitro research use only