

## RFC2 Antibody

Catalog No: #43122

Orders: [order@signalwayantibody.com](mailto:order@signalwayantibody.com)Support: [tech@signalwayantibody.com](mailto:tech@signalwayantibody.com)

## Description

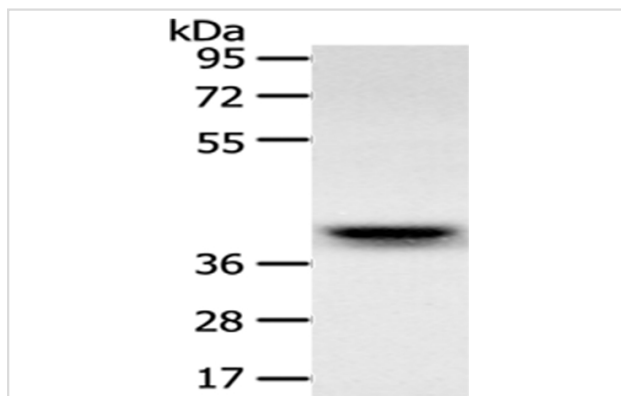
Product Name	RFC2 Antibody
Host Species	Rabbit
Clonality	Polyclonal
Purification	Antigen affinity purification.
Applications	WB
Species Reactivity	Hu
Specificity	The antibody detects endogenous levels of total RFC2 protein.
Immunogen Type	peptide
Immunogen Description	Synthetic peptide of human RFC2
Target Name	RFC2
Other Names	RFC40
Accession No.	Swiss-Prot#: P35250 Gene ID: 5982
Uniprot	P35250
GeneID	5982;
Calculated MW	39kd
Concentration	3.5mg/ml
Formulation	Rabbit IgG in pH7.4 PBS, 0.05% NaN <sub>3</sub> , 40% Glycerol.
Storage	Store at -20°C

## Application Details

Western blotting: 1:200-1:1000

Immunohistochemistry: 1:30-1:150

## Images



Gel: 10%SDS-PAGE  
 Lysate: 40 µg  
 Lane: Human liver cancer tissue  
 Primary antibody: 1/500 dilution  
 Secondary antibody: Goat anti rabbit IgG at 1/8000 dilution  
 Exposure time: 20 seconds

## Background

This gene encodes a member of the activator 1 small subunits family. The elongation of primed DNA templates by DNA polymerase delta and epsilon

requires the action of the accessory proteins, proliferating cell nuclear antigen (PCNA) and replication factor C (RFC). Replication factor C, also called activator 1, is a protein complex consisting of five distinct subunits. This gene encodes the 40 kD subunit, which has been shown to be responsible for binding ATP and may help promote cell survival. Disruption of this gene is associated with Williams syndrome. Alternatively spliced transcript variants encoding distinct isoforms have been described. A pseudogene of this gene has been defined on chromosome 2.

---

Note: This product is for in vitro research use only