

Description

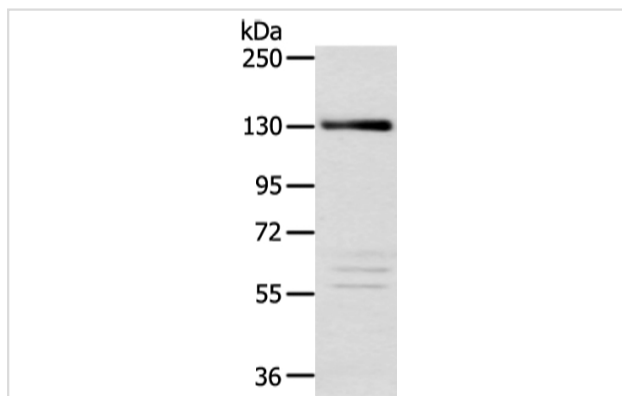
Product Name	RBL2 Antibody
Host Species	Rabbit
Clonality	Polyclonal
Purification	Antigen affinity purification.
Applications	WB
Species Reactivity	Hu
Specificity	The antibody detects endogenous levels of total RBL2 protein.
Immunogen Type	peptide
Immunogen Description	Synthetic peptide of human RBL2
Target Name	RBL2
Other Names	Rb2; P130
Accession No.	Swiss-Prot#: Q08999Gene ID: 5934
Uniprot	Q08999
GeneID	5934;
Calculated MW	128kd
Concentration	1.6mg/ml
Formulation	Rabbit IgG in pH7.4 PBS, 0.05% NaN ₃ , 40% Glycerol.
Storage	Store at -20°C

Application Details

Western blotting: 1:200-1:1000

Immunohistochemistry: 1:25-1:100

Images



Gel: 6%SDS-PAGE
 Lysate: 40 µg
 Lane: Lncap cell
 Primary antibody: 1/200 dilution
 Secondary antibody: Goat anti rabbit IgG at 1/8000 dilution
 Exposure time: 4 minutes

Background

Retinoblastoma-like protein 2 is a protein that in humans is encoded by the RBL2 gene. Key regulator of entry into cell division. Directly involved in

heterochromatin formation by maintaining overall chromatin structure and, in particular, that of constitutive heterochromatin by stabilizing histone methylation. Recruits and targets histone methyltransferases SUV420H1 and SUV420H2, leading to epigenetic transcriptional repression. Controls histone H4 'Lys-20' trimethylation.

Note: This product is for in vitro research use only