

SLC29A1 Antibody

Catalog No: #43124

Orders: order@signalwayantibody.comSupport: tech@signalwayantibody.com

Description

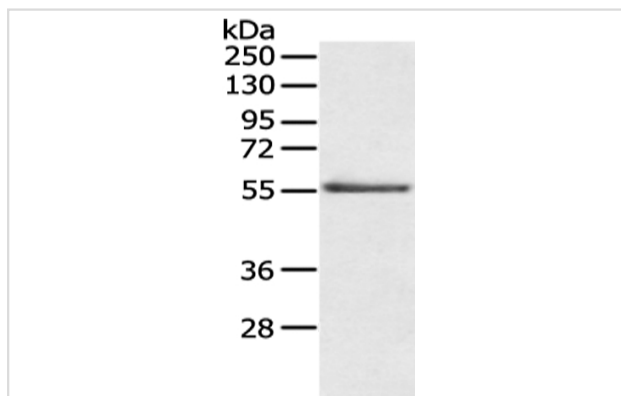
Product Name	SLC29A1 Antibody
Host Species	Rabbit
Clonality	Polyclonal
Purification	Antigen affinity purification.
Applications	WB
Species Reactivity	Hu
Specificity	The antibody detects endogenous levels of total SLC29A1 protein.
Immunogen Type	peptide
Immunogen Description	Synthetic peptide of human SLC29A1
Target Name	SLC29A1
Other Names	ENT1
Accession No.	Swiss-Prot#: Q99808Gene ID: 2030
Uniprot	Q99808
GeneID	2030;
Calculated MW	50kd
Concentration	4.2mg/ml
Formulation	Rabbit IgG in pH7.4 PBS, 0.05% NaN ₃ , 40% Glycerol.
Storage	Store at -20°C

Application Details

Western blotting: 1:200-1:1000

Immunohistochemistry: 1:20-1:100

Images



Gel: 8%SDS-PAGE
Lysate: 40 µg
Lane: Human placenta tissue
Primary antibody: 1/200 dilution
Secondary antibody: Goat anti rabbit IgG at 1/8000 dilution
Exposure time: 10 minutes

Background

This gene is a member of the equilibrative nucleoside transporter family. The gene encodes a transmembrane glycoprotein that localizes to the plasma

and mitochondrial membranes and mediates the cellular uptake of nucleosides from the surrounding medium. The protein is categorized as an equilibrative (as opposed to concentrative) transporter that is sensitive to inhibition by nitrobenzylthioinosine (NBMPR).

Note: This product is for in vitro research use only