

PFKFB4 Antibody

Catalog No: #43126

Orders: order@signalwayantibody.com

Support: tech@signalwayantibody.com

Description

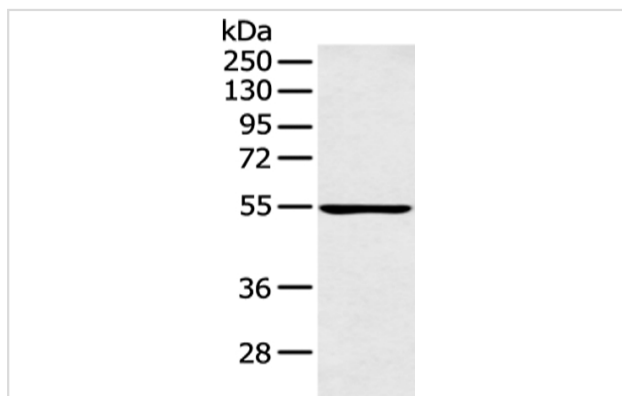
Product Name	PFKFB4 Antibody
Host Species	Rabbit
Clonality	Polyclonal
Purification	Antigen affinity purification.
Applications	WB
Species Reactivity	Hu
Specificity	The antibody detects endogenous levels of total PFKFB4 protein.
Immunogen Type	peptide
Immunogen Description	Synthetic peptide of human PFKFB4
Target Name	PFKFB4
Other Names	6-phosphofructo-2-kinase; 6-phosphofructo-2-kinase/fructose-2,6-biphosphatase 4; 6-phosphofructo-2-kinase/fructose-2,6-biphosphatase-4; 6PF-2-K/Fru-2,6-P2ase 4
Accession No.	Swiss-Prot#: Q16877 Gene ID: 5210
Uniprot	Q16877
GeneID	5210;
Calculated MW	54kd
Concentration	1.4mg/ml
Formulation	Rabbit IgG in pH7.4 PBS, 0.05% NaN ₃ , 40% Glycerol.
Storage	Store at -20°C

Application Details

Western blotting: 1:200-1:1000

Immunohistochemistry: 1:25-1:100

Images



Gel: 8%SDS-PAGE

Lysate: 40 µg

Lane: Raji cell

Primary antibody: 1/300 dilution

Secondary antibody: Goat anti rabbit IgG at 1/8000 dilution

Exposure time: 1 minute

Background

6-phosphofructo-2-kinase/fructose-2,6-bisphosphatase 4 (also known as PFKFB4) is an enzyme which in humans is encoded by the PFKFB4 gene. The bifunctional 6-phosphofructo-2-kinase (EC 2.7.1.105)/fructose-2,6-bisphosphatase (EC 3.1.3.46) (PFKFB) regulates the steady-state concentration of fructose 2,6-bisphosphate, an activator of a key regulatory enzyme of glycolysis, phosphofructokinase.

Note: This product is for in vitro research use only