

FOLH1 Antibody

Catalog No: #43127

Orders: order@signalwayantibody.comSupport: tech@signalwayantibody.com

Description

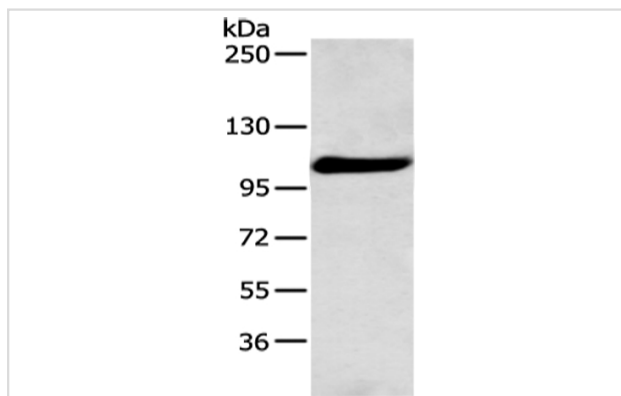
Product Name	FOLH1 Antibody
Host Species	Rabbit
Clonality	Polyclonal
Purification	Antigen affinity purification.
Applications	WB
Species Reactivity	Hu
Specificity	The antibody detects endogenous levels of total FOLH1 protein.
Immunogen Type	peptide
Immunogen Description	Synthetic peptide of human FOLH1
Target Name	FOLH1
Other Names	PSM; FGCP; FOLH; GCP2; PSMA; mGCP; GCPII; NAALAD1; NAALadase
Accession No.	Swiss-Prot#: Q04609 Gene ID: 2346
Uniprot	Q04609
GeneID	2346;
Calculated MW	84kd
Concentration	0.8mg/ml
Formulation	Rabbit IgG in pH7.4 PBS, 0.05% NaN ₃ , 40% Glycerol.
Storage	Store at -20°C

Application Details

Western blotting: 1:200-1:1000

Immunohistochemistry: 1:25-1:100

Images



Gel: 6%SDS-PAGE
 Lysate: 40 µg
 Lane: Lncap cell
 Primary antibody: 1/200 dilution
 Secondary antibody: Goat anti rabbit IgG at 1/8000 dilution
 Exposure time: 5 minutes

Background

This gene encodes a type II transmembrane glycoprotein belonging to the M28 peptidase family. The protein acts as a glutamate carboxypeptidase on

different alternative substrates, including the nutrient folate and the neuropeptide N-acetyl-L-aspartyl-L-glutamate and is expressed in a number of tissues such as prostate, central and peripheral nervous system and kidney. A mutation in this gene may be associated with impaired intestinal absorption of dietary folates, resulting in low blood folate levels and consequent hyperhomocysteinemia.?

Note: This product is for in vitro research use only