

## CXorf36 Antibody

Catalog No: #43128

Orders: order@signalwayantibody.com

Support: tech@signalwayantibody.com

## Description

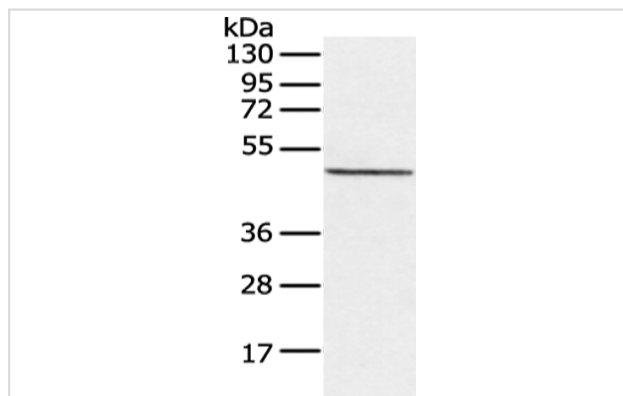
Product Name	CXorf36 Antibody
Host Species	Rabbit
Clonality	Polyclonal
Purification	Antigen affinity purification.
Applications	WB
Species Reactivity	Hu
Specificity	The antibody detects endogenous levels of total CXorf36 protein.
Immunogen Type	peptide
Immunogen Description	Synthetic peptide of human CXorf36
Target Name	CXorf36
Other Names	DIA1R; PRO3743; EPQL1862; bA435K1.1; 4930578C19Rik
Accession No.	Swiss-Prot#: Q9H7Y0?Gene ID: 79742
Uniprot	Q9H7Y0
GeneID	79742;
Calculated MW	49kd
Concentration	1.3mg/ml
Formulation	Rabbit IgG in pH7.4 PBS, 0.05% NaN <sub>3</sub> , 40% Glycerol.
Storage	Store at -20°C

## Application Details

Western blotting: 1:200-1:1000

Immunohistochemistry: 1:10-1:50

## Images



Gel: 8%SDS-PAGE  
 Lysate: 40 µg  
 Lane: HeLa cell  
 Primary antibody: 1/200 dilution  
 Secondary antibody: Goat anti rabbit IgG at 1/8000 dilution  
 Exposure time: 40 seconds

## Background

Chromosome X open reading frame 36 (CXorf36) is a gene that in humans encodes a protein. A hypothetical protein LOC79742B<sup>±</sup>. This protein

has a function that is not currently very well understood. CXorf36 is shown to be expressed ubiquitously at low levels in various tissues throughout the body. It is expressed highly in the ciliary ganglion, ovary, and uterus corpus. However, highest expression is seen in the trigeminal ganglion tissue.

---

Note: This product is for in vitro research use only