

GAS1 Antibody

Catalog No: #43131

Orders: order@signalwayantibody.comSupport: tech@signalwayantibody.com

Description

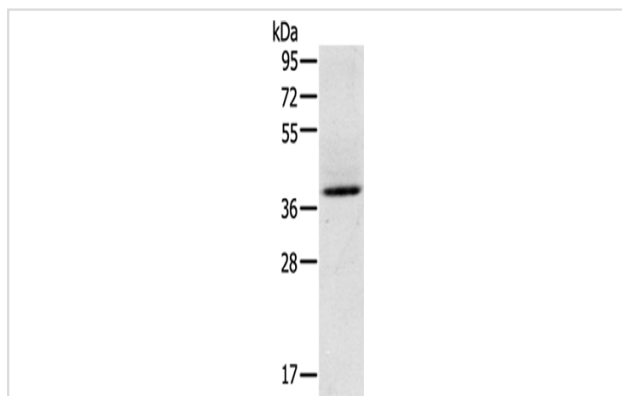
Product Name	GAS1 Antibody
Host Species	Rabbit
Clonality	Polyclonal
Purification	Antigen affinity purification.
Applications	WB
Species Reactivity	Hu Ms
Specificity	The antibody detects endogenous levels of total GAS1 protein.
Immunogen Type	peptide
Immunogen Description	Synthetic peptide of human GAS1
Target Name	GAS1
Other Names	GAS-1; GAS1; growth arrest-specific 1; Growth arrest-specific gene-1; Growth arrest-specific protein 1
Accession No.	Swiss-Prot#: P54826 Gene ID: 2619
Uniprot	P54826
GeneID	2619;
Calculated MW	36kd
Concentration	1.5mg/ml
Formulation	Rabbit IgG in pH7.4 PBS, 0.05% NaN ₃ , 40% Glycerol.
Storage	Store at -20°C

Application Details

Western blotting: 1:200-1:1000

Immunohistochemistry: 1:25-1:100

Images



Gel: 8%SDS-PAGE

Lysate: 40 µg

Lane: Mouse brain tissue

Primary antibody: 1/200 dilution

Secondary antibody: Goat anti rabbit IgG at 1/8000 dilution

Exposure time: 40 seconds

Background

Growth arrest-specific 1 plays a role in growth suppression. GAS1 blocks entry to S phase and prevents cycling of normal and transformed cells. Gas1

is a putative tumor suppressor gene.?

Note: This product is for in vitro research use only