

PSMB8 Antibody

Catalog No: #43134

Orders: order@signalwayantibody.com

Support: tech@signalwayantibody.com

Description

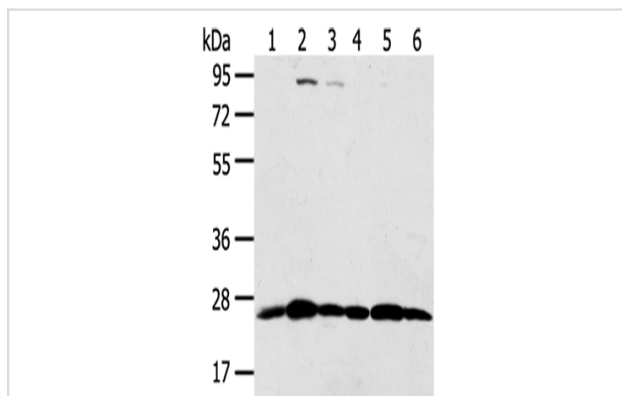
Product Name	PSMB8 Antibody
Host Species	Rabbit
Clonality	Polyclonal
Purification	Antigen affinity purification.
Applications	WB IHC
Species Reactivity	Hu
Specificity	The antibody detects endogenous levels of total PSMB8 protein.
Immunogen Type	peptide
Immunogen Description	Synthetic peptide of human PSMB8
Target Name	PSMB8
Other Names	JMP; ALDD; LMP7; NKJO; D6S216; PSMB5i; RING10; D6S216E
Accession No.	Swiss-Prot#: P28062 Gene ID: 5696
Uniprot	P28062
GeneID	5696;
Calculated MW	30kd
Concentration	2mg/ml
Formulation	Rabbit IgG in pH7.4 PBS, 0.05% NaN ₃ , 40% Glycerol.
Storage	Store at -20°C

Application Details

Western blotting: 1:500-1:2000

Immunohistochemistry: 1:25-1:100

Images



Gel: 8%SDS-PAGE

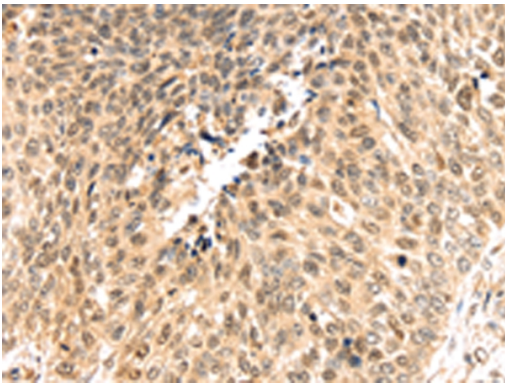
Lysate: 40 µg

Lane 1-6: HeLa cells, Raji cells, Jurkat cells, Human placenta tissue, A431 cells, 231 cells,

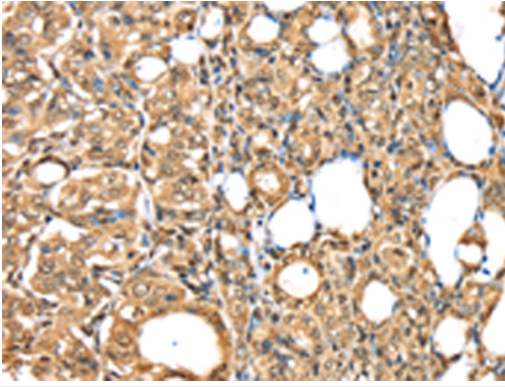
Primary antibody: 1/350 dilution

Secondary antibody: Goat anti rabbit IgG at 1/8000 dilution

Exposure time: 10 seconds



Immunohistochemical analysis of paraffin-embedded Human lung cancer tissue using #43134 at dilution 1/30.



Immunohistochemical analysis of paraffin-embedded Human thyroid cancer tissue using #43134 at dilution 1/30.

Background

The proteasome is a multicatalytic proteinase complex with a highly ordered ring-shaped 20S core structure. The core structure is composed of 4 rings of 28 non-identical subunits; 2 rings are composed of 7 alpha subunits and 2 rings are composed of 7 beta subunits. Proteasomes are distributed throughout eukaryotic cells at a high concentration and cleave peptides in an ATP/ubiquitin-dependent process in a non-lysosomal pathway.

Note: This product is for in vitro research use only