

LOXL2 Antibody

Catalog No: #43135

Orders: order@signalwayantibody.comSupport: tech@signalwayantibody.com

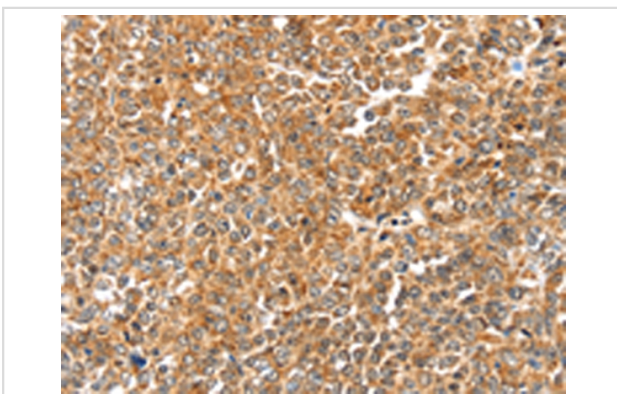
Description

Product Name	LOXL2 Antibody
Host Species	Rabbit
Clonality	Polyclonal
Purification	Antigen affinity purification.
Applications	IHC
Species Reactivity	Hu
Specificity	The antibody detects endogenous levels of total LOXL2 protein.
Immunogen Type	peptide
Immunogen Description	Synthetic peptide of human LOXL2
Target Name	LOXL2
Other Names	LOR2; WS9-14
Accession No.	Swiss-Prot#: Q9Y4K0 Gene ID: 4017
Uniprot	Q9Y4K0
GeneID	4017;
Concentration	1.6mg/ml
Formulation	Rabbit IgG in pH7.4 PBS, 0.05% NaN ₃ , 40% Glycerol.
Storage	Store at -20°C

Application Details

Immunohistochemistry: 1:20-1:100

Images



Immunohistochemical analysis of paraffin-embedded Human ovarian cancer tissue using #43135 at dilution 1/25,

Background

This gene encodes a member of the lysyl oxidase gene family. The prototypic member of the family is essential to the biogenesis of connective tissue, encoding an extracellular copper-dependent amine oxidase that catalyses the first step in the formation of crosslinks in collagens and elastin. A highly conserved amino acid sequence at the C-terminus end appears to be sufficient for amine oxidase activity, suggesting that each family member may retain this function. The N-terminus is poorly conserved and may impart additional roles in developmental regulation, senescence, tumor suppression,

cell growth control, and chemotaxis to each member of the family.

Note: This product is for in vitro research use only