

MAGEA11 Antibody

Catalog No: #43138

Orders: order@signalwayantibody.com

Support: tech@signalwayantibody.com

Description

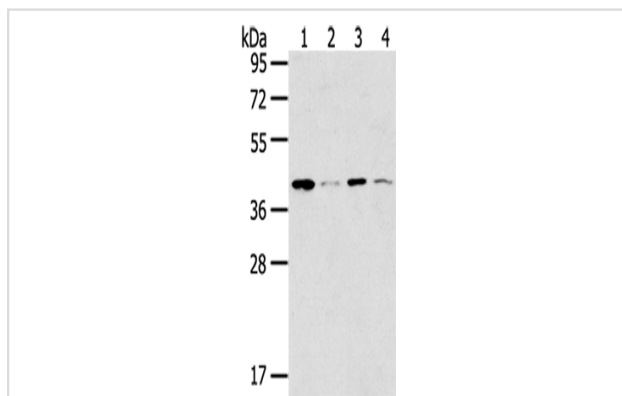
Product Name	MAGEA11 Antibody
Host Species	Rabbit
Clonality	Polyclonal
Purification	Antigen affinity purification.
Applications	WB IHC
Species Reactivity	Hu
Specificity	The antibody detects endogenous levels of total MAGEA11 protein.
Immunogen Type	peptide
Immunogen Description	Synthetic peptide of human MAGEA11
Target Name	MAGEA11
Other Names	CT1.11; MAGE11; MAGE-11; MAGEA-11
Accession No.	Swiss-Prot#: P43364 Gene ID: 4110
Uniprot	P43364
GeneID	4110;
Calculated MW	48kd
Concentration	0.9mg/ml
Formulation	Rabbit IgG in pH7.4 PBS, 0.05% NaN ₃ , 40% Glycerol.
Storage	Store at -20°C

Application Details

Western blotting: 1:500-1:2000

Immunohistochemistry: 1:20-1:100

Images



Gel: 8%SDS-PAGE

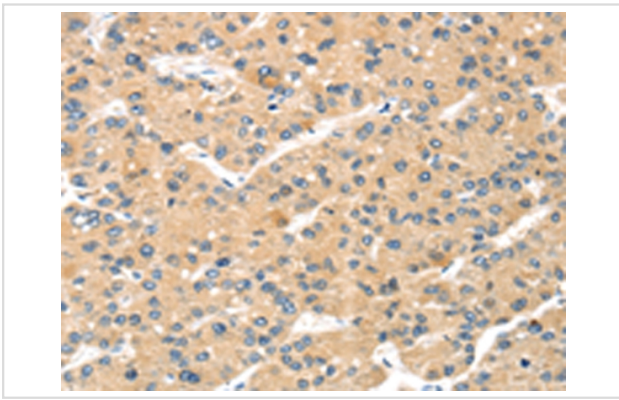
Lysate: 40 µg

Lane 1-4: 293T cells, K562 cells, Lovo cells, Human bladder carcinoma tissue,

Primary antibody: 1/200 dilution

Secondary antibody: Goat anti rabbit IgG at 1/8000 dilution

Exposure time: 30 seconds



Immunohistochemical analysis of paraffin-embedded Human liver cancer tissue using #43138 at dilution 1/20,

Background

This gene is a member of the MAGEA gene family. The members of this family encode proteins with 50 to 80% sequence identity to each other. The promoters and first exons of the MAGEA genes show considerable variability, suggesting that the existence of this gene family enables the same function to be expressed under different transcriptional controls.

Note: This product is for in vitro research use only