

MRE11A Antibody

Catalog No: #43139

Orders: order@signalwayantibody.comSupport: tech@signalwayantibody.com

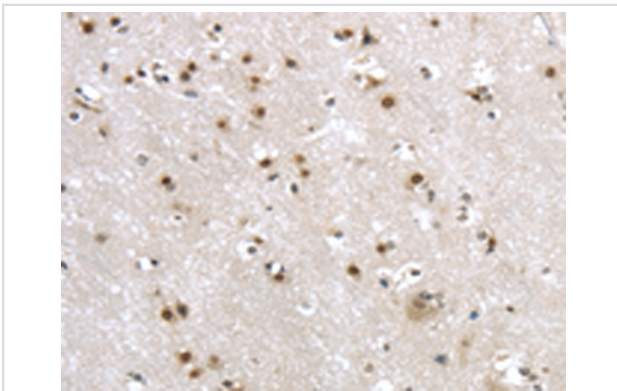
Description

Product Name	MRE11A Antibody
Host Species	Rabbit
Clonality	Polyclonal
Purification	Antigen affinity purification.
Applications	IHC
Species Reactivity	Hu
Specificity	The antibody detects endogenous levels of total MRE11A protein.
Immunogen Type	peptide
Immunogen Description	Synthetic peptide of human MRE11A
Target Name	MRE11A
Other Names	ATLD; HNGS1; MRE11; MRE11B
Accession No.	Swiss-Prot#: P49959 Gene ID: 4361
Uniprot	P49959
GeneID	4361;
Concentration	1.9mg/ml
Formulation	Rabbit IgG in pH7.4 PBS, 0.05% NaN ₃ , 40% Glycerol.
Storage	Store at -20°C

Application Details

Immunohistochemistry: 1:25-1:100

Images



Immunohistochemical analysis of paraffin-embedded Human brain tissue using #43139 at dilution 1/20,

Background

This gene encodes a nuclear protein involved in homologous recombination, telomere length maintenance, and DNA double-strand break repair. By itself, the protein has 3' to 5' exonuclease activity and endonuclease activity. The protein forms a complex with the RAD50 homolog; this complex is required for nonhomologous joining of DNA ends and possesses increased single-stranded DNA endonuclease and 3' to 5' exonuclease activities. In conjunction with a DNA ligase, this protein promotes the joining of noncomplementary ends in vitro using short homologies near the ends of the DNA

fragments. This gene has a pseudogene on chromosome 3. Alternative splicing of this gene results in two transcript variants encoding different isoforms.

Note: This product is for in vitro research use only