

## RCC1 Antibody

Catalog No: #43140

Orders: [order@signalwayantibody.com](mailto:order@signalwayantibody.com)Support: [tech@signalwayantibody.com](mailto:tech@signalwayantibody.com)

## Description

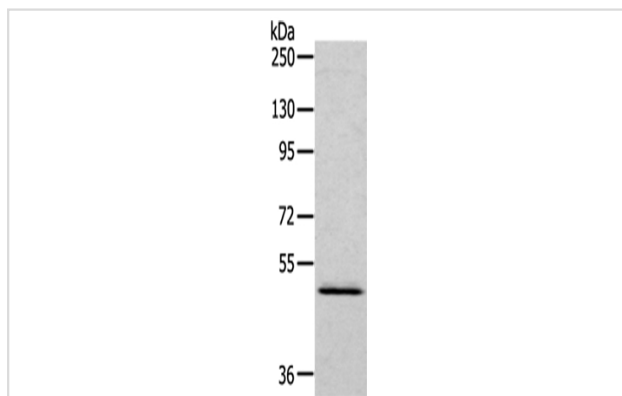
Product Name	RCC1 Antibody
Host Species	Rabbit
Clonality	Polyclonal
Purification	Antigen affinity purification.
Applications	WB
Species Reactivity	Hu
Specificity	The antibody detects endogenous levels of total RCC1 protein.
Immunogen Type	peptide
Immunogen Description	Synthetic peptide of human RCC1
Target Name	RCC1
Other Names	CHC1; RCC1-I; SNHG3-RCC1
Accession No.	Swiss-Prot#: P18754 Gene ID: 1104
Uniprot	P18754
GeneID	1104;
Calculated MW	45kd
Concentration	1.8mg/ml
Formulation	Rabbit IgG in pH7.4 PBS, 0.05% NaN <sub>3</sub> , 40% Glycerol.
Storage	Store at -20°C

## Application Details

Western blotting: 1:200-1:1000

Immunohistochemistry: 1:30-1:150

## Images



Gel: 6%SDS-PAGE

Lysate: 40 µg

Lane: HepG2 cells

Primary antibody: 1/200 dilution

Secondary antibody: Goat anti rabbit IgG at 1/8000 dilution

Exposure time: 2 minutes

## Background

RCC1 (regulator of chromosome condensation 1), increases the rate at which Ran exchanges GDP for GTP. Ran GAP1 opposes the effects of RCC1

by increasing the rate at which Ran hydrolyzes GTP to GDP. A protein designated Ran BP1 has no intrinsic GAP activity and functions as a GEF inhibitor, deactivating RCC1 and thereby indirectly increasing the ratio of Ran GDP to Ran GTP. Ran BP2 has been proposed as the Ran GTP docking site at the periphery of the nuclear pore complex.

---

Note: This product is for in vitro research use only