

RGS12 Antibody

Catalog No: #43141

Orders: order@signalwayantibody.com

Support: tech@signalwayantibody.com

Description

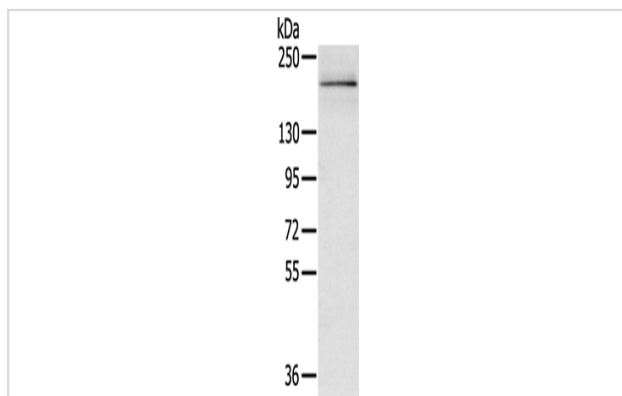
Product Name	RGS12 Antibody
Host Species	Rabbit
Clonality	Polyclonal
Purification	Antigen affinity purification.
Applications	WB
Species Reactivity	Hu
Specificity	The antibody detects endogenous levels of total RGS12 protein.
Immunogen Type	peptide
Immunogen Description	Synthetic peptide of human RGS12
Target Name	RGS12
Other Names	DKFZp761K1617; DKFZp761K1817; Regulator of G-protein signaling 12; regulator of G-protein signalling 12; RGS12
Accession No.	Swiss-Prot#: O14924 Gene ID: 6002
Uniprot	O14924
GeneID	6002;
Calculated MW	156kd
Concentration	2mg/ml
Formulation	Rabbit IgG in pH7.4 PBS, 0.05% NaN ₃ , 40% Glycerol.
Storage	Store at -20°C

Application Details

Western blotting: 1:200-1:1000

Immunohistochemistry: 1:25-1:100

Images



Gel: 6%SDS-PAGE

Lysate: 40 µg

Lane: HeLa cells

Primary antibody: 1/200 dilution

Secondary antibody: Goat anti rabbit IgG at 1/8000 dilution

Exposure time: 5 minutes

Background

This gene encodes a member of the 'regulator of G protein signaling' (RGS) gene family. The encoded protein may function as a guanosine triphosphatase (GTPase)-activating protein as well as a transcriptional repressor. This protein may play a role in tumorigenesis. Multiple transcript variants encoding distinct isoforms have been identified for this gene. Other alternative splice variants have been described but their biological nature has not been determined.

Note: This product is for in vitro research use only