

## SENP6 Antibody

Catalog No: #43143

Orders: order@signalwayantibody.com

Support: tech@signalwayantibody.com

## Description

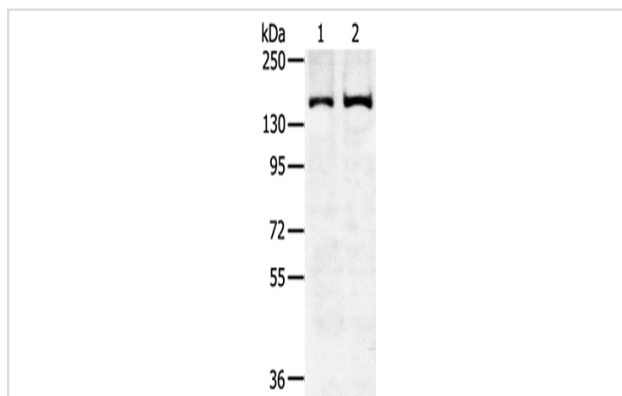
Product Name	SENP6 Antibody
Host Species	Rabbit
Clonality	Polyclonal
Purification	Antigen affinity purification.
Applications	WB IHC
Species Reactivity	Hu
Specificity	The antibody detects endogenous levels of total SENP6 protein.
Immunogen Type	peptide
Immunogen Description	Synthetic peptide of human SENP6
Target Name	SENP6
Other Names	SSP1; SUSP1
Accession No.	Swiss-Prot#: Q9GZR1 Gene ID: 26054
Uniprot	Q9GZR1
GeneID	26054;
Calculated MW	126kd
Concentration	1.2mg/ml
Formulation	Rabbit IgG in pH7.4 PBS, 0.05% NaN <sub>3</sub> , 40% Glycerol.
Storage	Store at -20°C

## Application Details

Western blotting: 1:200-1:1000

Immunohistochemistry: 1:25-1:100

## Images



Gel: 6%SDS-PAGE

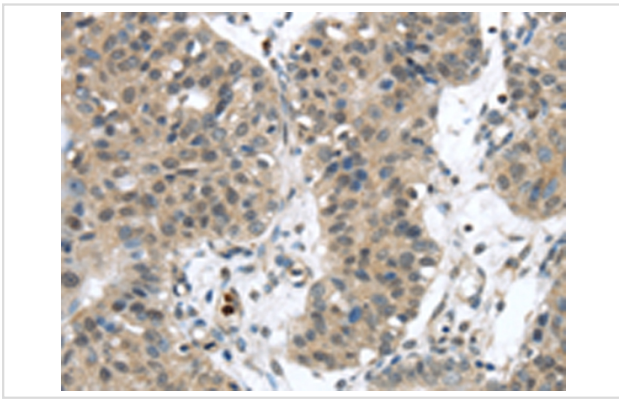
Lysate: 40 µg

Lane 1-2: Hela cells, K562 cells,

Primary antibody: 1/450 dilution

Secondary antibody: Goat anti rabbit IgG at 1/8000 dilution

Exposure time: 5 minutes



Immunohistochemical analysis of paraffin-embedded Human breast cancer tissue using #43143 at dilution 1/20,

## Background

Ubiquitin-like molecules (UBLs), such as SUMO1 (UBL1; MIM 601912), are structurally related to ubiquitin (MIM 191339) and can be ligated to target proteins in a similar manner as ubiquitin. However, covalent attachment of UBLs does not result in degradation of the modified proteins. SUMO1 modification is implicated in the targeting of RANGAP1 (MIM 602362) to the nuclear pore complex, as well as in stabilization of I-kappa-B-alpha (NFKBIA; MIM 164008) from degradation by the 26S proteasome.

Note: This product is for in vitro research use only