

STK36 Antibody

Catalog No: #43148

Orders: order@signalwayantibody.comSupport: tech@signalwayantibody.com

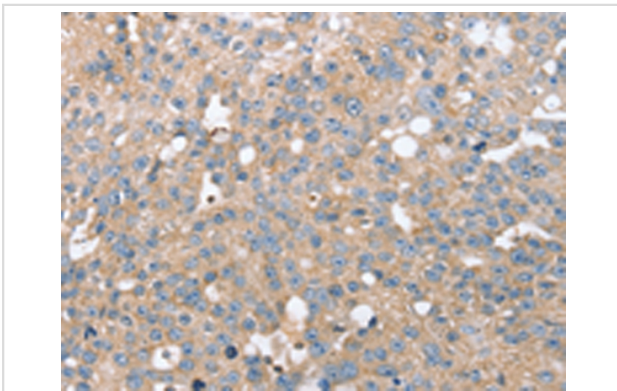
Description

Product Name	STK36 Antibody
Host Species	Rabbit
Clonality	Polyclonal
Purification	Antigen affinity purification.
Applications	IHC
Species Reactivity	Hu
Specificity	The antibody detects endogenous levels of total STK36 protein.
Immunogen Type	peptide
Immunogen Description	Synthetic peptide of human STK36
Target Name	STK36
Other Names	FU
Accession No.	Swiss-Prot#: Q9NRP7 Gene ID: 27148
Uniprot	Q9NRP7
GeneID	27148;
Concentration	1mg/ml
Formulation	Rabbit IgG in pH7.4 PBS, 0.05% NaN ₃ , 40% Glycerol.
Storage	Store at -20°C

Application Details

Immunohistochemistry: 1:25-1:100

Images



Immunohistochemical analysis of paraffin-embedded Human breast cancer tissue using #43148 at dilution 1/20,

Background

This gene encodes a member of the serine/threonine kinase family of enzymes. This family member is similar to a Drosophila protein that plays a key role in the Hedgehog signaling pathway. This human protein is a positive regulator of the GLI zinc-finger transcription factors. Knockout studies of the homologous mouse gene suggest that defects in this human gene may lead to congenital hydrocephalus, possibly due to a functional defect in motile cilia.?

Note: This product is for in vitro research use only