

MGST1 Antibody

Catalog No: #43149

Orders: order@signalwayantibody.comSupport: tech@signalwayantibody.com

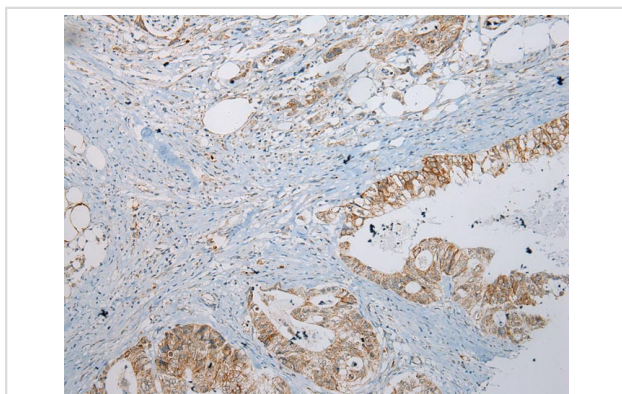
Description

Product Name	MGST1 Antibody
Host Species	Rabbit
Clonality	Polyclonal
Purification	Antigen affinity purification.
Applications	IHC
Species Reactivity	Hu
Specificity	The antibody detects endogenous levels of total MGST1 protein.
Immunogen Type	peptide
Immunogen Description	Synthetic peptide of human MGST1
Target Name	MGST1
Other Names	MGST; GST12; MGST-I
Accession No.	Swiss-Prot#: P10620Gene ID: 4257
Uniprot	P10620
GeneID	4257;
Concentration	1.1mg/ml
Formulation	Rabbit IgG in pH7.4 PBS, 0.05% NaN ₃ , 40% Glycerol.
Storage	Store at -20°C

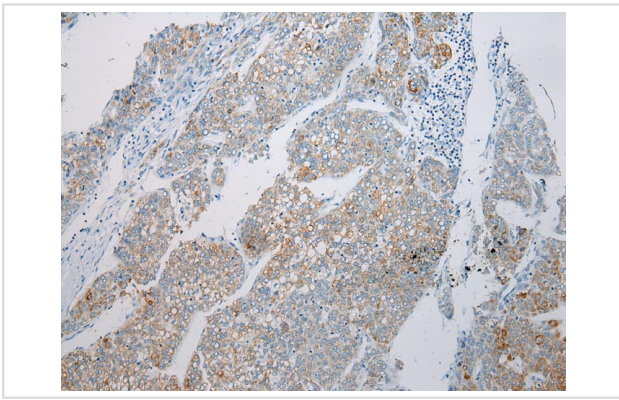
Application Details

Immunohistochemistry: 1:100-1:200

Images



Immunohistochemical analysis of paraffin-embedded Human Colorectal cancer tissue using #43149 at dilution 1/200.



Immunohistochemical analysis of paraffin-embedded Human Liver tissue using #43149 at dilution 1/200.

Background

The MAPEG (Membrane Associated Proteins in Eicosanoid and Glutathione metabolism) family consists of six human proteins, two of which are involved in the production of leukotrienes and prostaglandin E, important mediators of inflammation. Other family members, demonstrating glutathione S-transferase and peroxidase activities, are involved in cellular defense against toxic, carcinogenic, and pharmacologically active electrophilic compounds.

Note: This product is for in vitro research use only