

SYNPO Antibody

Catalog No: #43151

Orders: order@signalwayantibody.comSupport: tech@signalwayantibody.com

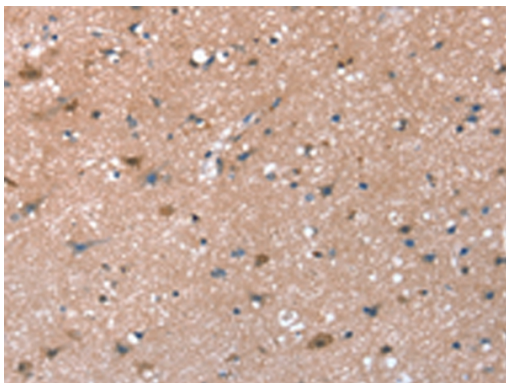
Description

Product Name	SYNPO Antibody
Host Species	Rabbit
Clonality	Polyclonal
Purification	Antigen affinity purification.
Applications	IHC
Species Reactivity	Hu
Specificity	The antibody detects endogenous levels of total SYNPO protein.
Immunogen Type	peptide
Immunogen Description	Synthetic peptide of human SYNPO
Target Name	SYNPO
Other Names	KIAA1029; Synaptopodin
Accession No.	Swiss-Prot#: Q8N3V7 Gene ID: 11346
Uniprot	Q8N3V7
GeneID	11346;
Concentration	1.6mg/ml
Formulation	Rabbit IgG in pH7.4 PBS, 0.05% NaN ₃ , 40% Glycerol.
Storage	Store at -20°C

Application Details

Immunohistochemistry: 1:25-1:100

Images



Immunohistochemical analysis of paraffin-embedded Human brain tissue using #43151 at dilution 1/30,

Background

Synaptopodin is an actin-associated protein that may play a role in actin-based cell shape and motility. The name synaptopodin derives from the protein's associations with postsynaptic densities and dendritic spines and with renal podocytes.

Note: This product is for in vitro research use only