

SYNPO2 Antibody

Catalog No: #43152

Orders: order@signalwayantibody.comSupport: tech@signalwayantibody.com

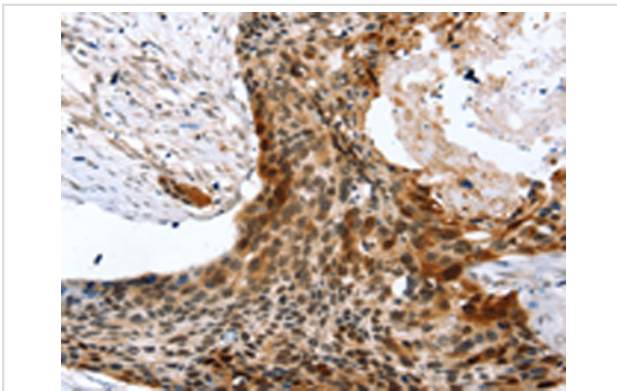
Description

Product Name	SYNPO2 Antibody
Host Species	Rabbit
Clonality	Polyclonal
Purification	Antigen affinity purification.
Applications	IHC
Species Reactivity	Hu
Specificity	The antibody detects endogenous levels of total SYNPO2 protein.
Immunogen Type	peptide
Immunogen Description	Synthetic peptide of human SYNPO2
Target Name	SYNPO2
Other Names	SYNPO2
Accession No.	Swiss-Prot#: Q9UMS6 Gene ID: 171024
Uniprot	Q9UMS6
GeneID	171024;
Concentration	2.5mg/ml
Formulation	Rabbit IgG in pH7.4 PBS, 0.05% NaN ₃ , 40% Glycerol.
Storage	Store at -20°C

Application Details

Immunohistochemistry: 1:10-1:50

Images



Immunohistochemical analysis of paraffin-embedded Human esophagus cancer tissue using #43152 at dilution 1/45,

Background

Synaptopodin-2 is a protein that in humans is encoded by the SYNPO2 gene. Has an actin-binding and actin-bundling activity. Synaptopodin is a proline-rich, actin-associated protein expressed in mature dendritic spines and renal podocytes. Synaptopodin appears to play a role in the actin-based plasticity of spines by linking actin to the spine apparatus.

Note: This product is for in vitro research use only