

## TM4SF1 Antibody

Catalog No: #43153

Orders: [order@signalwayantibody.com](mailto:order@signalwayantibody.com)Support: [tech@signalwayantibody.com](mailto:tech@signalwayantibody.com)

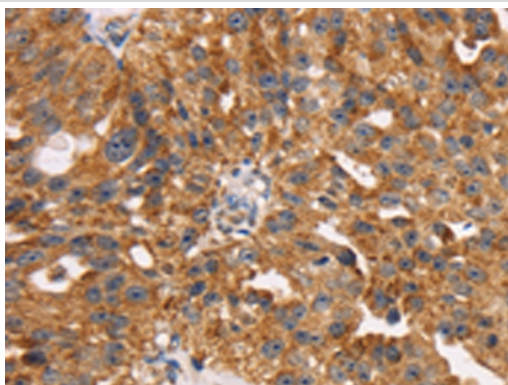
## Description

Product Name	TM4SF1 Antibody
Host Species	Rabbit
Clonality	Polyclonal
Purification	Antigen affinity purification.
Applications	IHC
Species Reactivity	Hu
Specificity	The antibody detects endogenous levels of total TM4SF1 protein.
Immunogen Type	peptide
Immunogen Description	Synthetic peptide of human TM4SF1
Target Name	TM4SF1
Other Names	L6; H-L6; M3S1; TAAL6
Accession No.	Swiss-Prot#: P30408 Gene ID: 4071
Uniprot	P30408
GeneID	4071;
Concentration	1.6mg/ml
Formulation	Rabbit IgG in pH7.4 PBS, 0.05% NaN <sub>3</sub> , 40% Glycerol.
Storage	Store at -20°C

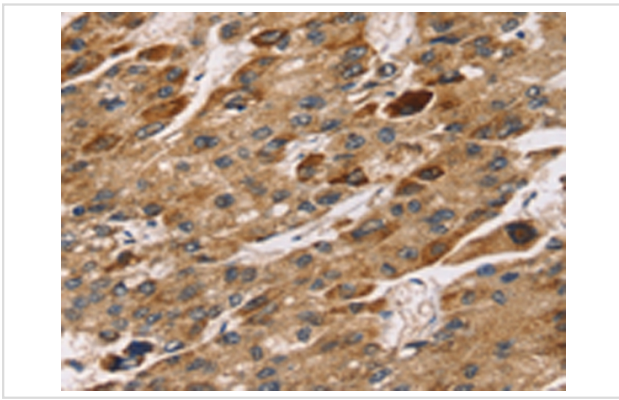
## Application Details

Immunohistochemistry: 1:25-1:100

## Images



Immunohistochemical analysis of paraffin-embedded Human breast cancer tissue using #43153 at dilution 1/30.



Immunohistochemical analysis of paraffin-embedded Human liver cancer tissue using #43153 at dilution 1/30.

## Background

The protein encoded by this gene is a member of the transmembrane 4 superfamily, also known as the tetraspanin family. Most of these members are cell-surface proteins that are characterized by the presence of four hydrophobic domains. The proteins mediate signal transduction events that play a role in the regulation of cell development, activation, growth and motility. This encoded protein is a cell surface antigen and is highly expressed in different carcinomas.?

Note: This product is for in vitro research use only