

## Creatine Kinase BB antibody

Catalog No: #22839

Orders: order@signalwayantibody.com

Support: tech@signalwayantibody.com

## Description

Product Name	Creatine Kinase BB antibody
Host Species	Rabbit
Clonality	Polyclonal
Purification	Purified by antigen-affinity chromatography.
Applications	WB IHC IF
Species Reactivity	Hu
Immunogen Type	Recombinant protein
Immunogen Description	Recombinant protein fragment contain a sequence corresponding to a region within amino acids 165 and 357 of Creatine Kinase BB
Target Name	Creatine Kinase BB
Other Names	B-CK; CKBB
Accession No.	Swiss-Prot:P12277 Gene ID:1152
Uniprot	P12277
GeneID	1152;
Concentration	0.5mg/ml
Formulation	Supplied in 0.1M Tris-buffered saline with 10% Glycerol (pH7.0). 0.01% Thimerosal was added as a preservative.
Storage	Store at -20°C for long term preservation (recommended). Store at 4°C for short term use.

## Application Details

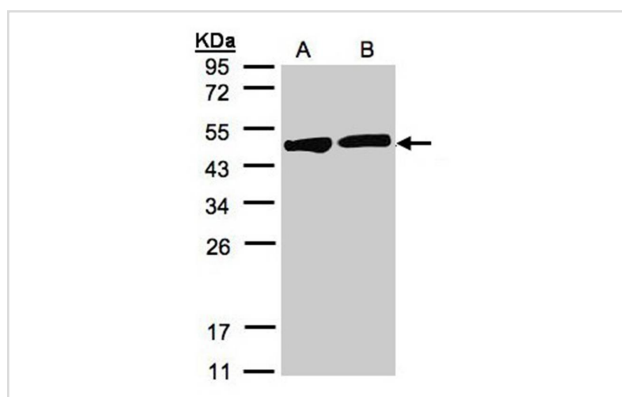
Predicted MW: 43kd

Western blotting: 1:500-1:3000

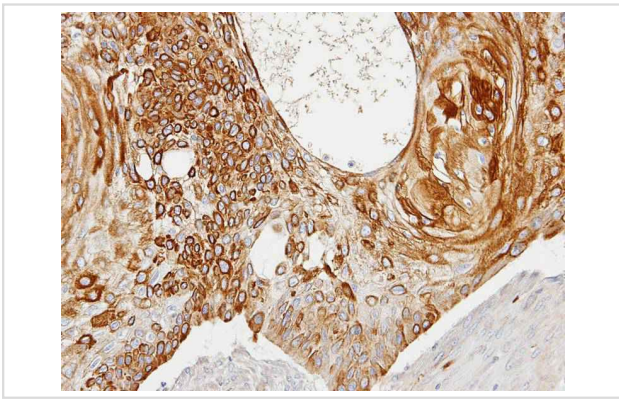
Immunohistochemistry: 1:100-1:250

Immunofluorescence: 1:100-1:200

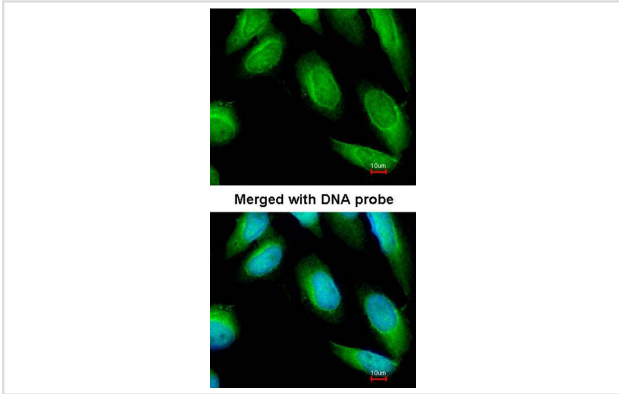
## Images



Sample(30 ug of whole cell lysate)  
 A: H1299  
 B: HeLa S3  
 12% SDS PAGE  
 Primary antibody diluted at 1: 1000



Immunohistochemical analysis of paraffin-embedded HSC3 xenograft, using Creatine kinase (brain) antibody at 1: 100 dilution.



Immunofluorescence analysis of paraformaldehyde-fixed HeLa, using Creatine Kinase BB antibody at 1: 100 dilution.

## Background

The protein encoded by this gene is a cytoplasmic enzyme involved in energy homeostasis. The encoded protein reversibly catalyzes the transfer of phosphate between ATP and various phosphogens such as creatine phosphate. It acts as a homodimer in brain as well as in other tissues, and as a heterodimer with a similar muscle isozyme in heart. The encoded protein is a member of the ATP:guanido phosphotransferase protein family. A pseudogene of this gene has been characterized. [provided by RefSeq]

Note: This product is for in vitro research use only