

## TAF15 Antibody

Catalog No: #43155

Orders: order@signalwayantibody.com

Support: tech@signalwayantibody.com

## Description

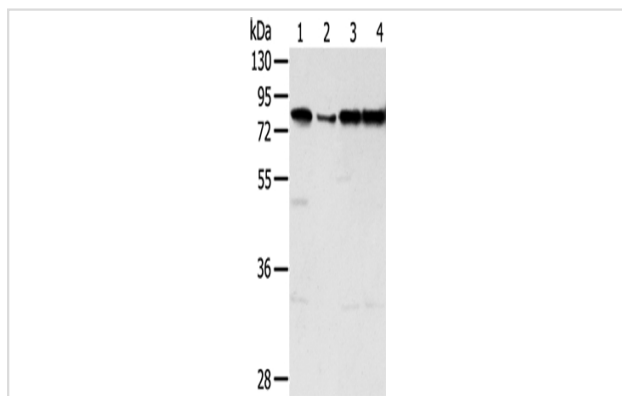
Product Name	TAF15 Antibody
Host Species	Rabbit
Clonality	Polyclonal
Purification	Antigen affinity purification.
Applications	WB IHC
Species Reactivity	Hu
Specificity	The antibody detects endogenous levels of total TAF15 protein.
Immunogen Type	peptide
Immunogen Description	Synthetic peptide of human TAF15
Target Name	TAF15
Other Names	Npl3; RBP56; TAF2N; TAFII68
Accession No.	Swiss-Prot#: Q92804 Gene ID: 8148
Uniprot	Q92804
GeneID	8148;
Calculated MW	62kd
Concentration	2.1mg/ml
Formulation	Rabbit IgG in pH7.4 PBS, 0.05% NaN <sub>3</sub> , 40% Glycerol.
Storage	Store at -20°C

## Application Details

Western blotting: 1:500-1:2000

Immunohistochemistry: 1:20-1:100

## Images



Gel: 8%SDS-PAGE

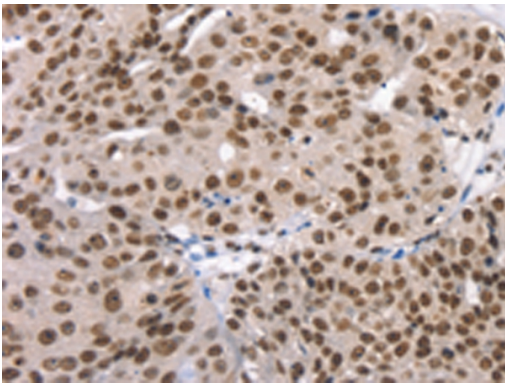
Lysate: 40 µg

Lane 1-4: Jurkat cells, hepg2 cells, Raji cells, A431 cells

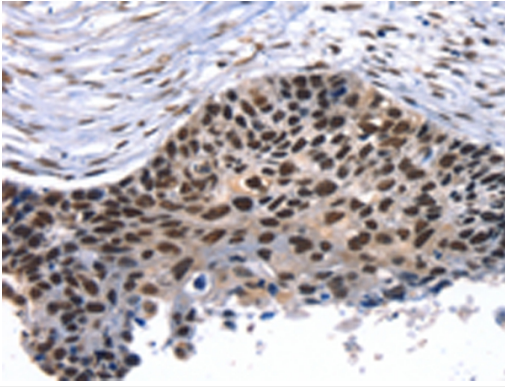
Primary antibody: 1/450 dilution

Secondary antibody: Goat anti rabbit IgG at 1/8000 dilution

Exposure time: 10 seconds



Immunohistochemical analysis of paraffin-embedded Human breast cancer tissue using #43155 at dilution 1/35.



Immunohistochemical analysis of paraffin-embedded Human esophagus cancer tissue using #43155 at dilution 1/35.

## Background

This gene encodes a member of the TET family of RNA-binding proteins. The encoded protein plays a role in RNA polymerase II gene transcription as a component of a distinct subset of multi-subunit transcription initiation factor TFIID complexes. Translocations involving this gene play a role in acute leukemia and extraskeletal myxoid chondrosarcoma, and mutations in this gene may play a role in amyotrophic lateral sclerosis.?

Note: This product is for in vitro research use only