

TAP2 Antibody

Catalog No: #43156

Orders: order@signalwayantibody.comSupport: tech@signalwayantibody.com

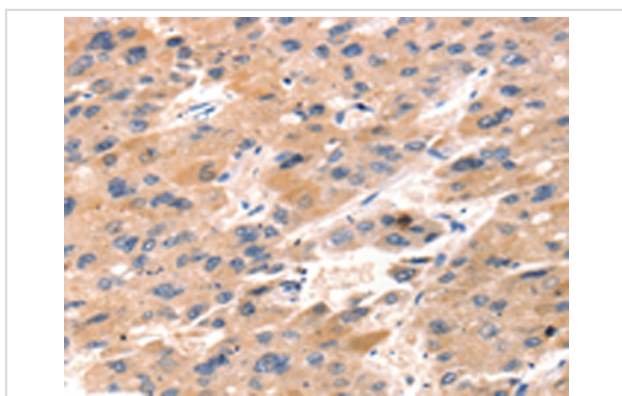
Description

Product Name	TAP2 Antibody
Host Species	Rabbit
Clonality	Polyclonal
Purification	Antigen affinity purification.
Applications	IHC
Species Reactivity	Hu
Specificity	The antibody detects endogenous levels of total TAP2 protein.
Immunogen Type	peptide
Immunogen Description	Synthetic peptide of human TAP2
Target Name	TAP2
Other Names	APT2; PSF2; ABC18; ABCB3; PSF-2; RING11; D6S217E
Accession No.	Swiss-Prot#: Q03519 Gene ID: 6891
Uniprot	Q03519
GeneID	6891;
Concentration	1.6mg/ml
Formulation	Rabbit IgG in pH7.4 PBS, 0.05% NaN ₃ , 40% Glycerol.
Storage	Store at -20°C

Application Details

Immunohistochemistry: 1:25-1:100

Images



Immunohistochemical analysis of paraffin-embedded Human liver cancer tissue using #43156 at dilution 1/30,

Background

The membrane-associated protein encoded by this gene is a member of the superfamily of ATP-binding cassette (ABC) transporters. ABC proteins transport various molecules across extra- and intra-cellular membranes. ABC genes are divided into seven distinct subfamilies (ABC1, MDR/TAP, MRP, ALD, OABP, GCN20, White). This protein is a member of the MDR/TAP subfamily. Members of the MDR/TAP subfamily are involved in multidrug resistance. This gene is located 7 kb telomeric to gene family member ABCB2.

Note: This product is for in vitro research use only