

## TRIM25 Antibody

Catalog No: #43160

Orders: [order@signalwayantibody.com](mailto:order@signalwayantibody.com)Support: [tech@signalwayantibody.com](mailto:tech@signalwayantibody.com)

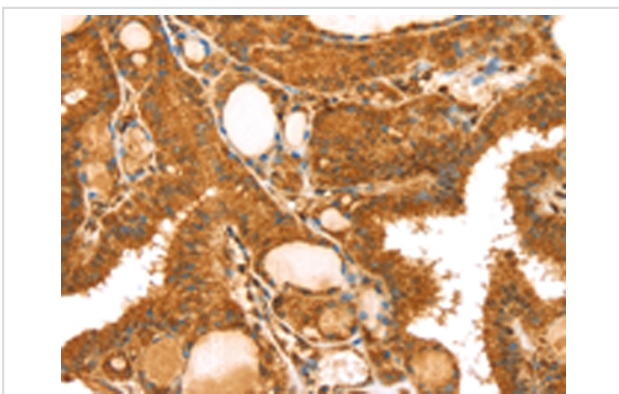
## Description

Product Name	TRIM25 Antibody
Host Species	Rabbit
Clonality	Polyclonal
Purification	Antigen affinity purification.
Applications	IHC
Species Reactivity	Hu
Specificity	The antibody detects endogenous levels of total TRIM25 protein.
Immunogen Type	peptide
Immunogen Description	Synthetic peptide of human TRIM25
Target Name	TRIM25
Other Names	EFP; Z147; RNF147; ZNF147
Accession No.	Swiss-Prot#: Q14258Gene ID: 7706
Uniprot	Q14258
GeneID	7706;
Concentration	2.6mg/ml
Formulation	Rabbit IgG in pH7.4 PBS, 0.05% NaN <sub>3</sub> , 40% Glycerol.
Storage	Store at -20°C

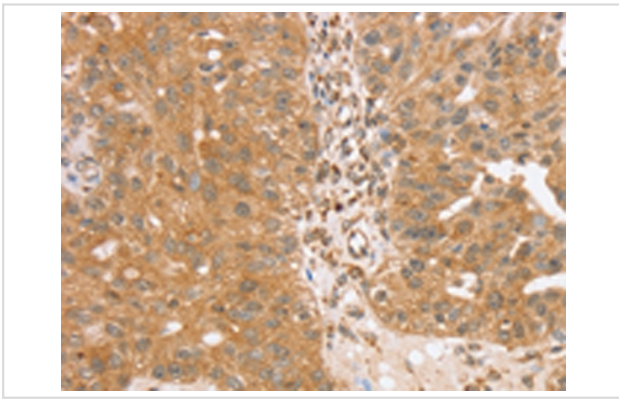
## Application Details

Immunohistochemistry: 1:25-1:100

## Images



Immunohistochemical analysis of paraffin-embedded Human thyroid cancer tissue using #43160 at dilution 1/40.



Immunohistochemical analysis of paraffin-embedded Human breast cancer tissue using #43160 at dilution 1/40.

## Background

The protein encoded by this gene is a member of the tripartite motif (TRIM) family. The TRIM motif includes three zinc-binding domains, a RING, a B-box type 1 and a B-box type 2, and a coiled-coil region. The protein localizes to the cytoplasm. The presence of potential DNA-binding and dimerization-transactivation domains suggests that this protein may act as a transcription factor, similar to several other members of the TRIM family. Expression of the gene is upregulated in response to estrogen, and it is thought to mediate estrogen actions in breast cancer as a primary response gene.

Note: This product is for in vitro research use only