

EI24 Antibody

Catalog No: #43165

Orders: order@signalwayantibody.comSupport: tech@signalwayantibody.com

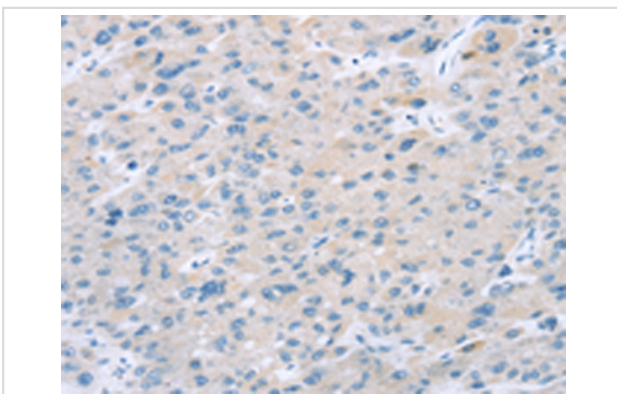
Description

Product Name	EI24 Antibody
Host Species	Rabbit
Clonality	Polyclonal
Purification	Antigen affinity purification.
Applications	IHC
Species Reactivity	Hu
Specificity	The antibody detects endogenous levels of total EI24 protein.
Immunogen Type	peptide
Immunogen Description	Synthetic peptide of human EI24
Target Name	EI24
Other Names	EPG4; PIG8; TP53I8
Accession No.	Swiss-Prot#: O14681Gene ID: 9538
Uniprot	O14681
GeneID	9538;
Concentration	1.6mg/ml
Formulation	Rabbit IgG in pH7.4 PBS, 0.05% NaN ₃ , 40% Glycerol.
Storage	Store at -20°C

Application Details

Immunohistochemistry: 1:25-1:100

Images



Immunohistochemical analysis of paraffin-embedded Human liver cancer tissue using #43165 at dilution 1/25,

Background

This gene encodes a putative tumor suppressor and has higher expression in p53-expressing cells than in control cells and is an immediate-early induction target of p53-mediated apoptosis. The encoded protein may suppress cell growth by inducing apoptotic cell death through the caspase 9 and mitochondrial pathways. This gene is located on human chromosome 11q24, a region frequently altered in cancers. Alternative splicing results in multiple transcript variants. Pseudogenes of this gene have been defined on chromosomes 1, 3, 7, and 8.?

Note: This product is for in vitro research use only