

TPD52 Antibody

Catalog No: #43166

Orders: order@signalwayantibody.comSupport: tech@signalwayantibody.com

Description

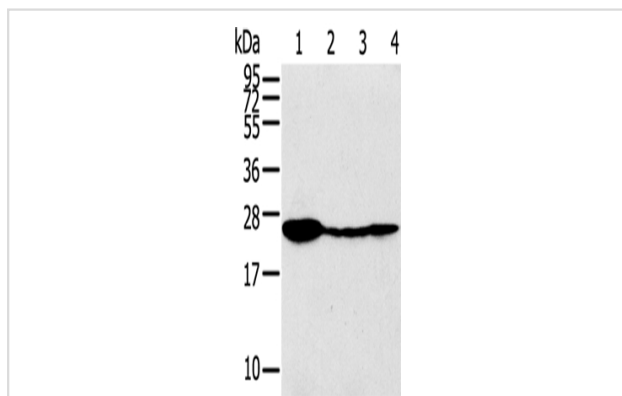
Product Name	TPD52 Antibody
Host Species	Rabbit
Clonality	Polyclonal
Purification	Antigen affinity purification.
Applications	WB
Species Reactivity	Hu
Specificity	The antibody detects endogenous levels of total TPD52 protein.
Immunogen Type	peptide
Immunogen Description	Synthetic peptide of human TPD52
Target Name	TPD52
Other Names	D52; N8L; PC-1; PrLZ; hD52
Accession No.	Swiss-Prot#: P55327 Gene ID: 7163
Uniprot	P55327
GeneID	7163;
Calculated MW	24kd
Concentration	2.2mg/ml
Formulation	Rabbit IgG in pH7.4 PBS, 0.05% NaN ₃ , 40% Glycerol.
Storage	Store at -20°C

Application Details

Western blotting: 1:500-1:2000

Immunohistochemistry: 1:25-1:100

Images



Gel: 12%SDS-PAGE

Lysate: 40 µg

Lane 1-4: Raji cells, 231 cells, 293T cells, A549 cells

Primary antibody: 1/320 dilution

Secondary antibody: Goat anti rabbit IgG at 1/8000 dilution

Exposure time: 5 seconds

Background

The tumor protein D52 (TPD52) family consists of three members, TPD52, TPD52L1 (D53), and TPD52L2 (D54). These small coiled-coil motif bearing

proteins interact in hetero- and homomeric fashion. The TPD52 gene maps to chromosome 8q21, and due to amplification, shows frequent overexpression in prostate and breast carcinomas. TPD52 bound to annexin VI in a Ca(2+)-dependent manner, suggesting that these molecules may act in concert to regulate secretory processes in plasma cells.

Note: This product is for in vitro research use only