

## TPD52L1 Antibody

Catalog No: #43167

Orders: order@signalwayantibody.com

Support: tech@signalwayantibody.com

## Description

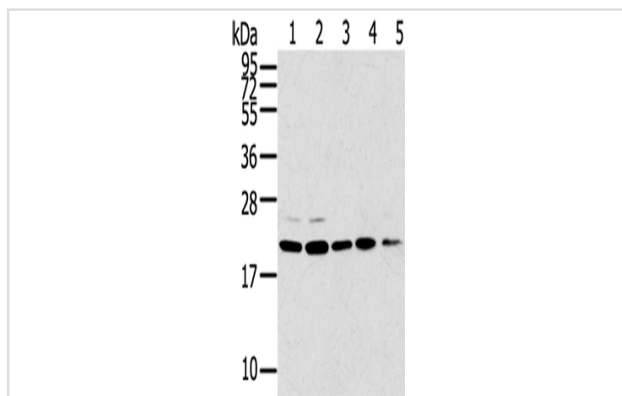
Product Name	TPD52L1 Antibody
Host Species	Rabbit
Clonality	Polyclonal
Purification	Antigen affinity purification.
Applications	WB
Species Reactivity	Hu
Specificity	The antibody detects endogenous levels of total TPD52L1 protein.
Immunogen Type	peptide
Immunogen Description	Synthetic peptide of human TPD52L1
Target Name	TPD52L1
Other Names	D53; hD53
Accession No.	Swiss-Prot#: Q16890 Gene ID: 7164
Uniprot	Q16890
GeneID	7164;
Calculated MW	22kd
Concentration	2.3mg/ml
Formulation	Rabbit IgG in pH7.4 PBS, 0.05% NaN <sub>3</sub> , 40% Glycerol.
Storage	Store at -20°C

## Application Details

Western blotting: 1:500-1:2000

Immunohistochemistry: 1:25-1:100

## Images



Gel: 12%SDS-PAGE

Lysate: 40 µg

Lane 1-5: 293T cells, 231 cells, PC3 cells, A549 cells, K562 cells

Primary antibody: 1/300 dilution

Secondary antibody: Goat anti rabbit IgG at 1/8000 dilution

Exposure time: 10 seconds

## Background

This gene encodes a member of the tumor protein D52 (TPD52) family. The encoded protein contains a coiled-coil domain and may form homo- or

hetero-dimer with TPD52 family members. The protein is reported to be involved in cell proliferation and calcium signaling. It also interacts with the mitogen-activated protein kinase kinase kinase 5 (MAP3K5/ASK1) and positively regulates MAP3K5-induced apoptosis.?

---

Note: This product is for in vitro research use only