

## WNT2 Antibody

Catalog No: #43192

Orders: [order@signalwayantibody.com](mailto:order@signalwayantibody.com)Support: [tech@signalwayantibody.com](mailto:tech@signalwayantibody.com)

## Description

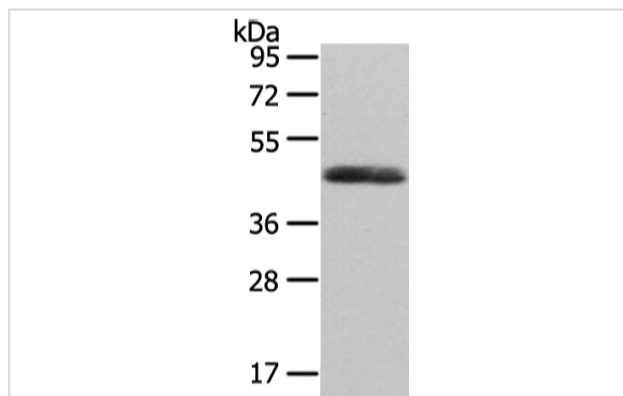
Product Name	WNT2 Antibody
Host Species	Rabbit
Clonality	Polyclonal
Purification	Antigen affinity purification.
Applications	WB IHC
Species Reactivity	Hu
Specificity	The antibody detects endogenous levels of total WNT2 protein.
Immunogen Type	peptide
Immunogen Description	Synthetic peptide of human WNT2
Target Name	WNT2
Other Names	IRP; INT1L1
Accession No.	Swiss-Prot#: P09544Gene ID: 7472
Uniprot	P09544
GeneID	7472;
Calculated MW	40kd
Concentration	2.7mg/ml
Formulation	Rabbit IgG in pH7.4 PBS, 0.05% NaN <sub>3</sub> , 40% Glycerol.
Storage	Store at -20°C

## Application Details

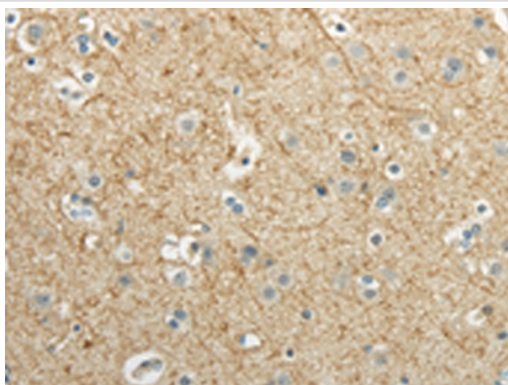
Western blotting: 1:500-1:2000

Immunohistochemistry: 1:25-1:100

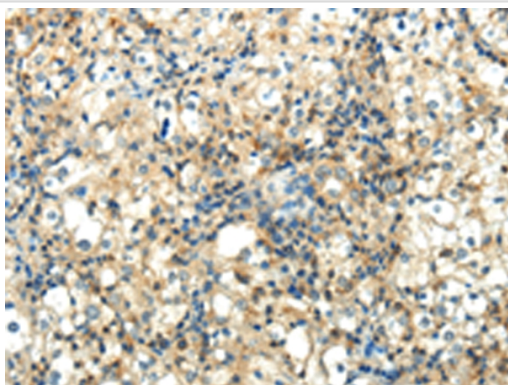
## Images



Gel: 8%SDS-PAGE  
Lysate: 40 µg  
Lane: Human endometrial cancer tissue  
Primary antibody: 1/300 dilution  
Secondary antibody: Goat anti rabbit IgG at 1/8000 dilution  
Exposure time: 10 seconds



Immunohistochemical analysis of paraffin-embedded Human brain tissue using #43192 at dilution 1/40.



Immunohistochemical analysis of paraffin-embedded Human prostate cancer tissue using #43192 at dilution 1/40.

## Background

This gene is a member of the WNT gene family. The WNT gene family consists of structurally related genes which encode secreted signaling proteins. These proteins have been implicated in oncogenesis and in several developmental processes, including regulation of cell fate and patterning during embryogenesis. Alternatively spliced transcript variants have been identified for this gene.

Note: This product is for in vitro research use only