

## RHOA Antibody

Catalog No: #43196

Orders: [order@signalwayantibody.com](mailto:order@signalwayantibody.com)Support: [tech@signalwayantibody.com](mailto:tech@signalwayantibody.com)

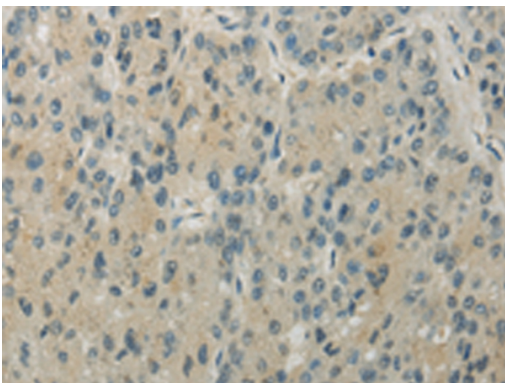
## Description

Product Name	RHOA Antibody
Host Species	Rabbit
Clonality	Polyclonal
Purification	Antigen affinity purification.
Applications	IHC
Species Reactivity	Hu
Specificity	The antibody detects endogenous levels of total RHOA protein.
Immunogen Type	peptide
Immunogen Description	Synthetic peptide of human RHOA
Target Name	RHOA
Other Names	ARHU; G28K; WRCH1; hG28K; CDC42L1
Accession No.	Swiss-Prot#: Q7L0Q8 Gene ID: 58480
Uniprot	Q7L0Q8
GeneID	58480;
Concentration	2.1mg/ml
Formulation	Rabbit IgG in pH7.4 PBS, 0.05% NaN <sub>3</sub> , 40% Glycerol.
Storage	Store at -20°C

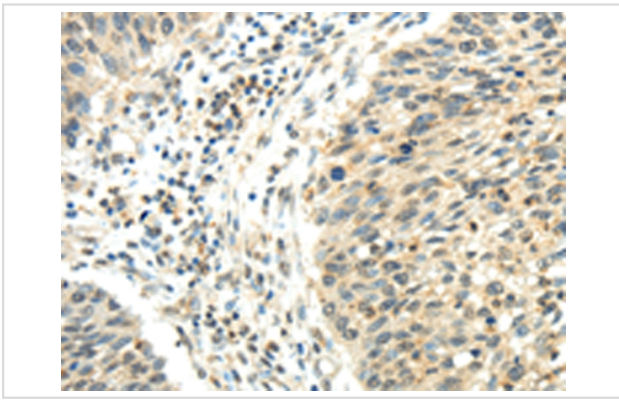
## Application Details

Immunohistochemistry: 1:25-1:100

## Images



Immunohistochemical analysis of paraffin-embedded Human liver cancer tissue using #43196 at dilution 1/30.



Immunohistochemical analysis of paraffin-embedded Human lung cancer tissue using #43196 at dilution 1/30.

## Background

This gene encodes a member of the Rho family of GTPases. This protein can activate PAK1 and JNK1, and can induce filopodium formation and stress fiber dissolution. It may also mediate the effects of WNT1 signaling in the regulation of cell morphology, cytoskeletal organization, and cell proliferation. A non-coding transcript variant of this gene results from naturally occurring read-through transcription between this locus and the neighboring DUSP5P (dual specificity phosphatase 5 pseudogene) locus.

Note: This product is for in vitro research use only