

## ZBTB2 Antibody

Catalog No: #43204

Orders: [order@signalwayantibody.com](mailto:order@signalwayantibody.com)Support: [tech@signalwayantibody.com](mailto:tech@signalwayantibody.com)

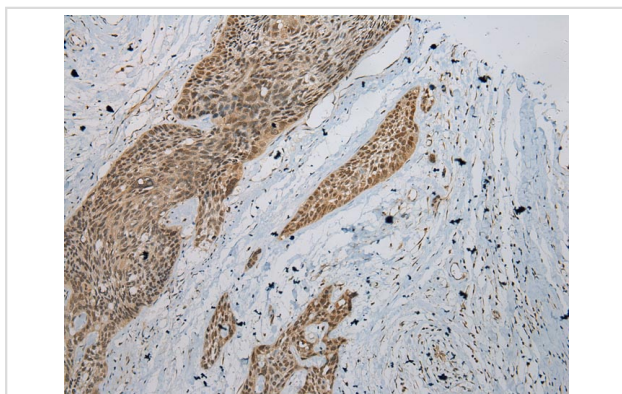
## Description

|                       |   |
|-----------------------|---|
| Product Name          | ZBTB2 Antibody  |
| Host Species          | Rabbit  |
| Clonality             | Polyclonal  |
| Purification          | Antigen affinity purification.                                  |
| Applications          | IHC   |
| Species Reactivity    | Hu  |
| Specificity           | The antibody detects endogenous levels of total ZBTB2 protein.  |
| Immunogen Type        | peptide   |
| Immunogen Description | Synthetic peptide of human ZBTB2                                |
| Target Name           | ZBTB2   |
| Other Names           | ZNF437  |
| Accession No.         | Swiss-Prot#: Q8N680 Gene ID: 57621                              |
| Uniprot               | Q8N680  |
| GeneID                | 57621;  |
| Concentration         | 1.6mg/ml  |
| Formulation           | Rabbit IgG in pH7.4 PBS, 0.05% NaN <sub>3</sub> , 40% Glycerol. |
| Storage               | Store at -20°C  |

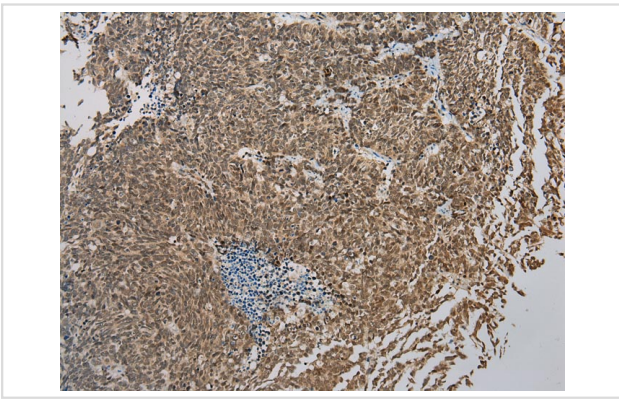
## Application Details

Immunohistochemistry: 1:100-1:200

## Images



Immunohistochemical analysis of paraffin-embedded Human Esophagus cancer tissue using #43204 at dilution 1/200.



Immunohistochemical analysis of paraffin-embedded Human Lung cancer tissue using #43204 at dilution 1/200.

## Background

ZBTB2 is a 514 amino acid nuclear protein that contains one BTB (POZ) domain and 4 C2H2-type zinc fingers. ZBTB25, also known as ZNF46 or KUP, is a 435 amino acid nuclear protein that is expressed mainly in hematopoietic cells and testis and contains one BTB (POZ) domain and 2 C2H2-type zinc fingers.

Note: This product is for in vitro research use only