

ZFP30 Antibody

Catalog No: #43207

Orders: order@signalwayantibody.comSupport: tech@signalwayantibody.com

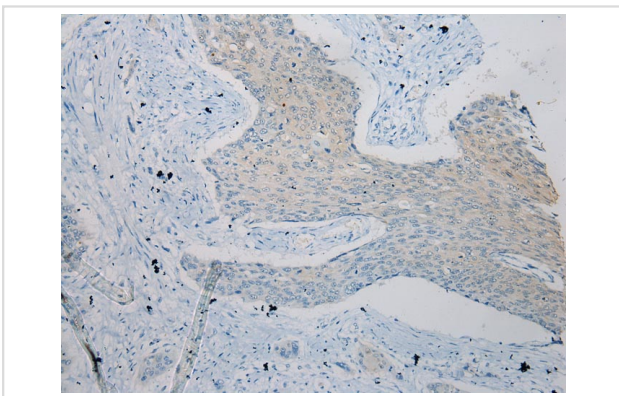
Description

Product Name	ZFP30 Antibody
Host Species	Rabbit
Clonality	Polyclonal
Purification	Antigen affinity purification.
Applications	IHC
Species Reactivity	Hu
Specificity	The antibody detects endogenous levels of total ZFP30 protein.
Immunogen Description	Synthetic peptide of human ZFP30
Target Name	ZFP30
Other Names	ZNF745
Accession No.	Swiss-Prot#: Q9Y2G7 Gene ID: 22835
Uniprot	Q9Y2G7
GeneID	22835;
Concentration	1.7mg/ml
Formulation	Rabbit IgG in pH7.4 PBS, 0.05% NaN ₃ , 40% Glycerol.
Storage	Store at -20°C

Application Details

Immunohistochemistry: 1:100-1:200

Images



Immunohistochemical analysis of paraffin-embedded Human Esophagus cancer tissue using #43207 at dilution 1/200.

Background

ZFP30 (zinc finger protein 30 homolog) is a 519 amino acid protein that localizes to the nucleus and is composed of thirteen C₂H₂-type zinc fingers and one KRAB domain. ZFP30 is encoded by a gene located on human chromosome 19, which consists of over 63 million bases, houses approximately 1,400 genes and is recognized for having the greatest gene density of the human chromosomes. It is the genetic home for a number of immunoglobulin (Ig) superfamily members, including the killer cell and leukocyte Ig-like receptors, a number of ICAMs, the CEACAM and PSG families, and Fc receptors (FcRs).

Note: This product is for in vitro research use only