

MKK3(Phospho-Ser189) Antibody

Catalog No: #11145

Package Size: #11145-1 50ul #11145-2 100ul

Orders: order@signalwayantibody.comSupport: tech@signalwayantibody.com

Description

| | |
|-----------------------|---|
| Product Name | MKK3(Phospho-Ser189) Antibody |
| Host Species | Rabbit |
| Clonality | Polyclonal |
| Purification | Antibodies were produced by immunizing rabbits with synthetic phosphopeptide and KLH conjugates. Antibodies were purified by affinity-chromatography using epitope-specific phosphopeptide. Non-phospho specific antibodies were removed by chromatography using non-phosphopeptide. |
| Applications | WB IHC IF |
| Species Reactivity | Hu Ms Rt |
| Specificity | The antibody detects endogenous level of MKK3 only when phosphorylated at serine 189. |
| Immunogen Type | Peptide-KLH |
| Immunogen Description | Peptide sequence around phosphorylation site of serine 189 (V-D-S(p)-V-A) derived from Human MKK3. |
| Target Name | MKK3 |
| Modification | Phospho |
| Other Names | MAP kinase kinase 3; MAP2K3; MAPK/ERK kinase 3; MAPKK 3; MEK3 |
| Accession No. | Swiss-Prot: P46734NCBI Protein: NP_002747.2 |
| Uniprot | P46734 |
| GeneID | 5606; |
| Concentration | 1.0mg/ml |
| Formulation | Supplied at 1.0mg/mL in phosphate buffered saline (without Mg ²⁺ and Ca ²⁺), pH 7.4, 150mM NaCl, 0.02% sodium azide and 50% glycerol. |
| Storage | Store at -20°C for long term preservation (recommended). Store at 4°C for short term use. |

Application Details

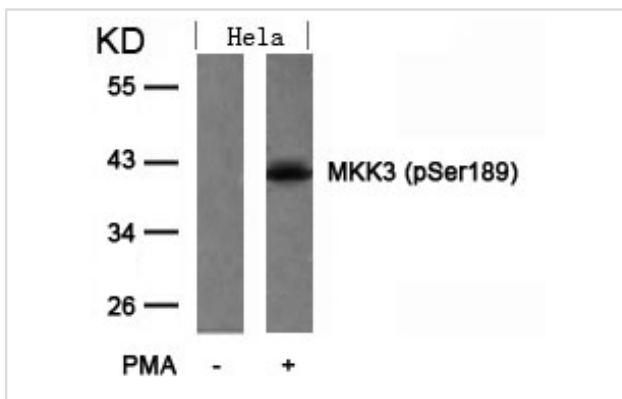
Predicted MW: 40kd

Western blotting: 1:500~1:1000

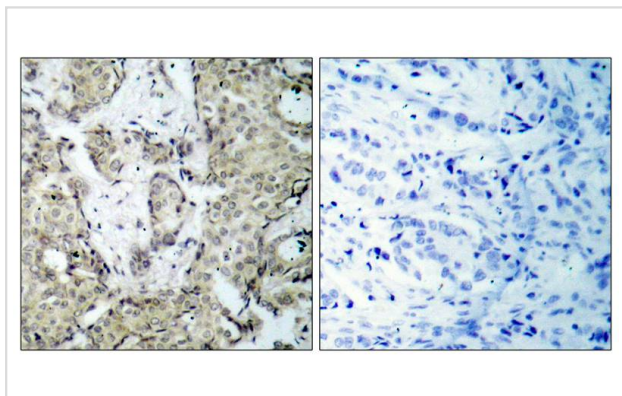
Immunohistochemistry: 1:50~1:100

Immunofluorescence: 1:100~1:200

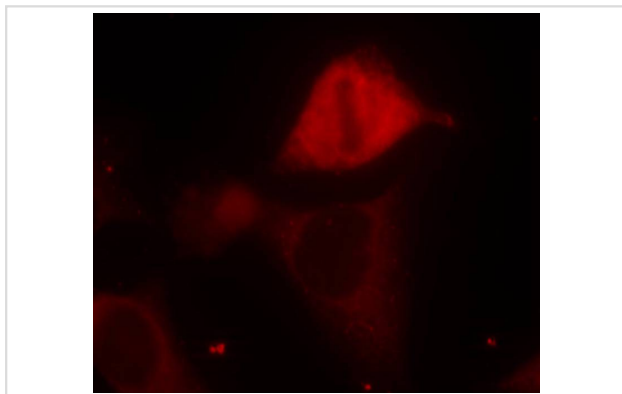
Images



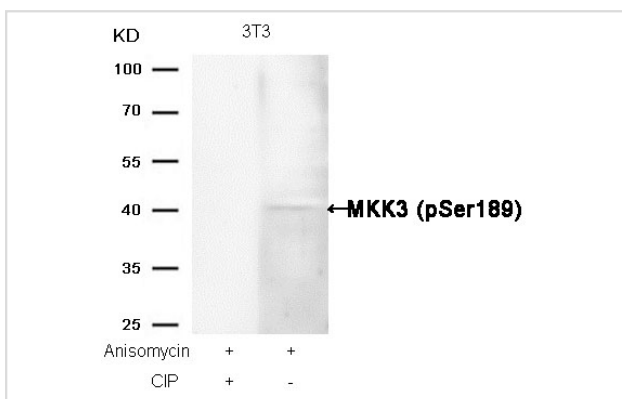
Western blot analysis of extracts from HeLa cells untreated or treated with PMA using MKK3(Phospho-Ser189) Antibody #11145.



Immunohistochemical analysis of paraffin-embedded human breast carcinoma tissue using MKK3(Phospho-Ser189) Antibody #11145(left) or the same antibody preincubated with blocking peptide(right).



Immunofluorescence staining of methanol-fixed HeLa cells using MKK3(Phospho-Ser189) Antibody #11145.



Western blot analysis of extracts from 3T3 cells, treated with Anisomycin or calf intestinal phosphatase (CIP), using MKK3 (Phospho-Ser189) Antibody #11145.

Background

Dual specificity kinase. Is activated by cytokines and environmental stress in vivo. Catalyzes the concomitant phosphorylation of a threonine and a tyrosine residue in the MAP kinase p38.

Wang W, et al. (2002) Mol Cell Biol ; 22(10): 3389-403.

Raingaud J, et al. (1996) Mol Cell Biol; 16(3): 1247-55.

Note: This product is for in vitro research use only