

AP2A1 Antibody

Catalog No: #43215

Orders: order@signalwayantibody.comSupport: tech@signalwayantibody.com

Description

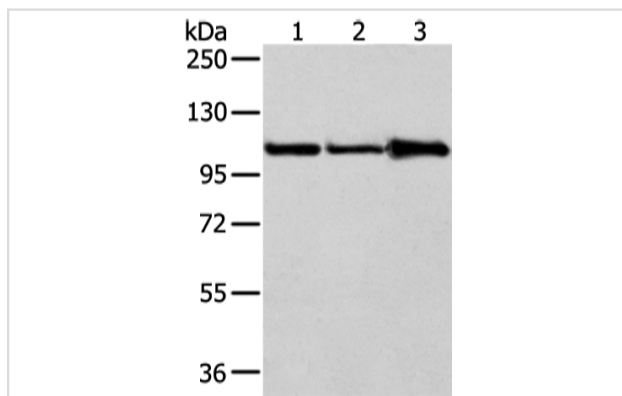
Product Name	AP2A1 Antibody
Host Species	Rabbit
Clonality	Polyclonal
Purification	Antigen affinity purification.
Applications	WB IHC
Species Reactivity	Hu Ms
Specificity	The antibody detects endogenous levels of total AP2A1 protein.
Immunogen Type	peptide
Immunogen Description	Synthetic peptide of human AP2A1
Target Name	AP2A1
Other Names	ADTAA; CLAPA1; AP2-ALPHA
Accession No.	Swiss-Prot#: O95782Gene ID: 160
Uniprot	O95782
GeneID	160;
Calculated MW	108kd
Concentration	1.4mg/ml
Formulation	Rabbit IgG in pH7.4 PBS, 0.05% NaN ₃ , 40% Glycerol.
Storage	Store at -20°C

Application Details

Western blotting: 1:500-1:2000

Immunohistochemistry: 1:10-1:50

Images



Gel: 6%SDS-PAGE

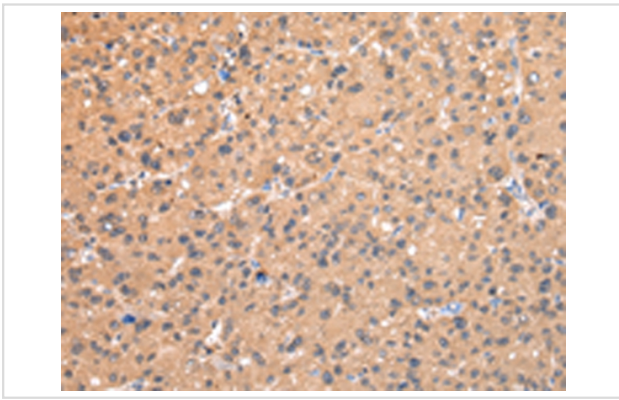
Lysate: 40 µg

Lane 1-3: A431, 231 and NIH/3T3 cell

Primary antibody: 1/250 dilution

Secondary antibody: Goat anti rabbit IgG at 1/8000 dilution

Exposure time: 15 seconds



Immunohistochemical analysis of paraffin-embedded Human liver cancer tissue using #43215 at dilution 1/20,

Background

This gene encodes the alpha 1 adaptin subunit of the adaptor protein 2 (AP-2) complex found in clathrin coated vesicles. The AP-2 complex is a heterotetramer consisting of two large adaptins (alpha or beta), a medium adaptin (mu), and a small adaptin (sigma). The complex is part of the protein coat on the cytoplasmic face of coated vesicles which links clathrin to receptors in vesicles. Alternative splicing of this gene results in two transcript variants encoding two different isoforms.

Note: This product is for in vitro research use only