

## APLN Antibody

Catalog No: #43216

Orders: [order@signalwayantibody.com](mailto:order@signalwayantibody.com)Support: [tech@signalwayantibody.com](mailto:tech@signalwayantibody.com)

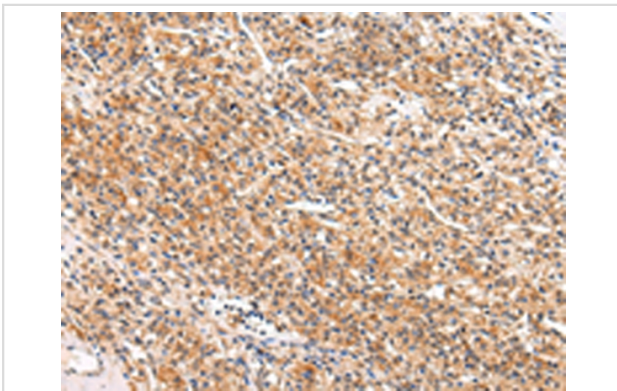
## Description

Product Name	APLN Antibody
Host Species	Rabbit
Clonality	Polyclonal
Purification	Antigen affinity purification.
Applications	IHC
Species Reactivity	Hu Ms Rt
Specificity	The antibody detects endogenous levels of total APLN protein.
Immunogen Type	peptide
Immunogen Description	Synthetic peptide of human APLN
Target Name	APLN
Other Names	APEL; XNPEP2
Accession No.	Swiss-Prot#: Q9ULZ1 Gene ID: 8862
Uniprot	Q9ULZ1
GeneID	8862;
Concentration	1.5mg/ml
Formulation	Rabbit IgG in pH7.4 PBS, 0.05% NaN <sub>3</sub> , 40% Glycerol.
Storage	Store at -20°C

## Application Details

Immunohistochemistry: 1:20-1:100

## Images



Immunohistochemical analysis of paraffin-embedded Human prostate cancer tissue using #43216 at dilution 1/20,

## Background

This gene encodes a peptide that functions as an endogenous ligand for the G protein coupled receptor APJ. The encoded protein is synthesized as a prepropeptide that is processed into biologically active C-terminal fragments. The peptide fragments activate different tissue specific signaling pathways that regulate diverse biological functions including fluid homeostasis, cardiovascular function and insulin secretion. This protein also functions as a coreceptor for the human immunodeficiency virus 1.

---

Note: This product is for in vitro research use only