

## KRT20 Antibody

Catalog No: #43218

Orders: [order@signalwayantibody.com](mailto:order@signalwayantibody.com)Support: [tech@signalwayantibody.com](mailto:tech@signalwayantibody.com)

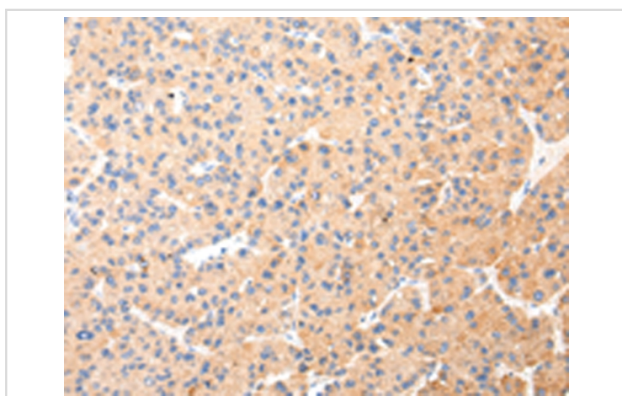
## Description

Product Name	KRT20 Antibody
Host Species	Rabbit
Clonality	Polyclonal
Purification	Antigen affinity purification.
Applications	IHC
Species Reactivity	Hu
Specificity	The antibody detects endogenous levels of total KRT20 protein.
Immunogen Type	peptide
Immunogen Description	Synthetic peptide of human KRT20
Target Name	KRT20
Other Names	K20; CD20; CK20; CK-20; KRT21
Accession No.	Swiss-Prot#: P35900 Gene ID: 54474
Uniprot	P35900
GeneID	54474;
Concentration	2.2mg/ml
Formulation	Rabbit IgG in pH7.4 PBS, 0.05% NaN <sub>3</sub> , 40% Glycerol.
Storage	Store at -20°C

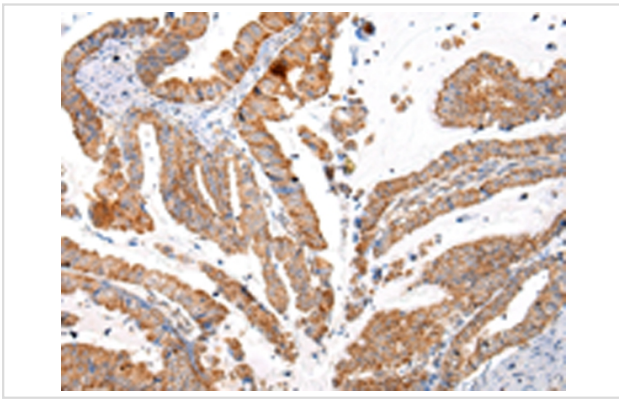
## Application Details

Immunohistochemistry: 1:20-1:100

## Images



Immunohistochemical analysis of paraffin-embedded Human liver cancer tissue using #43218 at dilution 1/35.



Immunohistochemical analysis of paraffin-embedded Human esophagus cancer tissue using #43218 at dilution 1/35.

## Background

The protein encoded by this gene is a member of the keratin family. The keratins are intermediate filament proteins responsible for the structural integrity of epithelial cells and are subdivided into cytokeratins and hair keratins. The type I cytokeratins consist of acidic proteins which are arranged in pairs of heterotypic keratin chains. This cytokeratin is a major cellular protein of mature enterocytes and goblet cells and is specifically expressed in the gastric and intestinal mucosa. The type I cytokeratin genes are clustered in a region of chromosome 17q12-q21.

Note: This product is for in vitro research use only