

COL8A2 Antibody

Catalog No: #43219

Orders: order@signalwayantibody.comSupport: tech@signalwayantibody.com

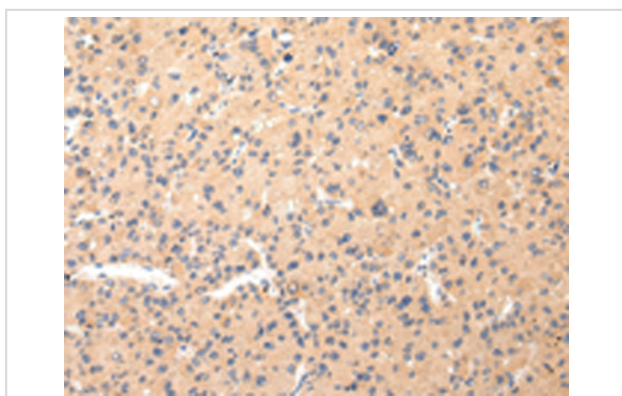
Description

Product Name	COL8A2 Antibody
Host Species	Rabbit
Clonality	Polyclonal
Purification	Antigen affinity purification.
Applications	IHC
Species Reactivity	Hu Ms
Specificity	The antibody detects endogenous levels of total COL8A2 protein.
Immunogen Type	peptide
Immunogen Description	Synthetic peptide of human COL8A2
Target Name	COL8A2
Other Names	FECD; PPCD; FECD1; PPCD2
Accession No.	Swiss-Prot#: P25067 Gene ID: 1296
Uniprot	P25067
GeneID	1296;
Concentration	0.4mg/ml
Formulation	Rabbit IgG in pH7.4 PBS, 0.05% NaN ₃ , 40% Glycerol.
Storage	Store at -20°C

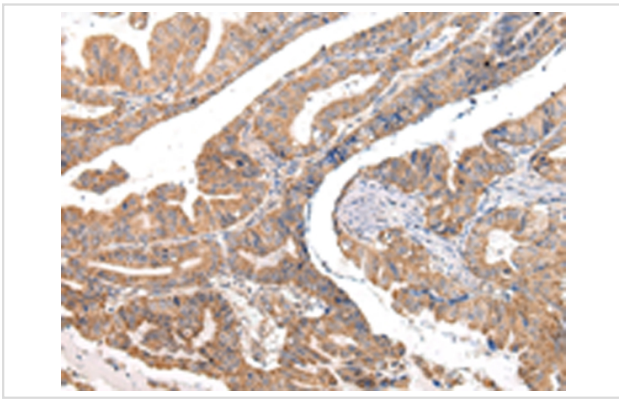
Application Details

Immunohistochemistry: 1:25-1:100

Images



Immunohistochemical analysis of paraffin-embedded Human liver cancer tissue using #43219 at dilution 1/20.



Immunohistochemical analysis of paraffin-embedded Human esophagus cancer tissue using #43219 at dilution 1/20.

Background

This gene encodes the alpha 2 chain of type VIII collagen. This protein is a major component of the basement membrane of the corneal endothelium and forms homo- or heterotrimers with alpha 1 (VIII) type collagens. Defects in this gene are associated with Fuchs endothelial corneal dystrophy and posterior polymorphous corneal dystrophy type 2. Alternative splicing results in multiple transcript variants.?

Note: This product is for in vitro research use only