

Adenosine A2A-R antibody

Catalog No: #22846

Orders: order@signalwayantibody.com

Support: tech@signalwayantibody.com

Description

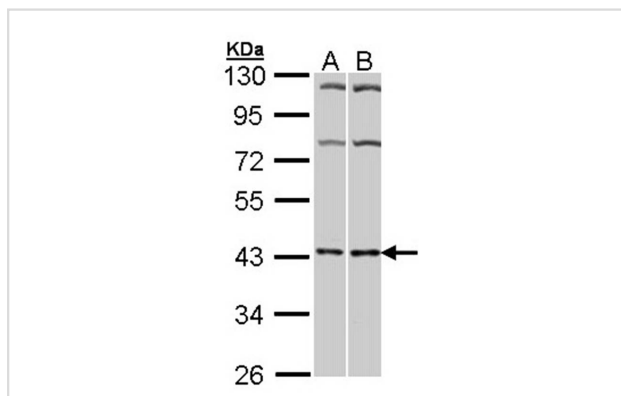
Product Name	Adenosine A2A-R antibody
Host Species	Rabbit
Clonality	Polyclonal
Purification	Purified by antigen-affinity chromatography.
Applications	WB
Species Reactivity	Hu
Immunogen Type	Peptide
Immunogen Description	Synthetic peptide contain a sequence corresponding to a region within amino acids 338 and 402 of Human ADORA2A
Target Name	Adenosine A2A-R
Other Names	ADORA2; RDC8; hA2aR
Accession No.	Swiss-Prot:P29274Gene ID:135
Uniprot	P29274
GeneID	135;
Concentration	1mg/ml
Formulation	Supplied in 0.1M Tris-buffered saline with 10% Glycerol (pH7.0). 0.01% Thimerosal was added as a preservative.
Storage	Store at -20°C for long term preservation (recommended). Store at 4°C for short term use.

Application Details

Predicted MW: 45kd

Western blotting: 1:500-1:3000

Images



Sample (30 ug of whole cell lysate)
 A: HeLa
 B: Molt-4
 10% SDS PAGE
 Primary antibody diluted at 1: 1000

Background

This gene encodes a protein which is one of several receptor subtypes for adenosine. The activity of the encoded protein, a G-protein coupled

receptor family member, is mediated by G proteins which activate adenylyl cyclase. The encoded protein is abundant in basal ganglia, vasculature and platelets and it is a major target of caffeine. [provided by RefSeq]

Note: This product is for in vitro research use only