

AXIN1 Antibody

Catalog No: #43229

Orders: order@signalwayantibody.comSupport: tech@signalwayantibody.com

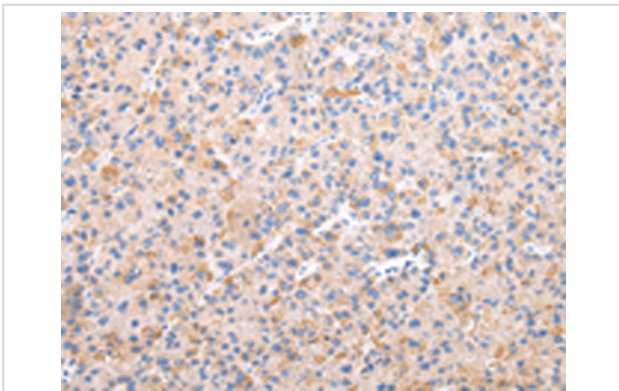
Description

Product Name	AXIN1 Antibody
Host Species	Rabbit
Clonality	Polyclonal
Purification	Antigen affinity purification.
Applications	IHC
Species Reactivity	Hu Ms Rt
Specificity	The antibody detects endogenous levels of total AXIN1 protein.
Immunogen Type	peptide
Immunogen Description	Synthetic peptide of human AXIN1
Target Name	AXIN1
Other Names	AXIN; PPP1R49
Accession No.	Swiss-Prot#: O15169 Gene ID: 8312
Uniprot	O15169
GeneID	8312;
Concentration	2mg/ml
Formulation	Rabbit IgG in pH7.4 PBS, 0.05% NaN ₃ , 40% Glycerol.
Storage	Store at -20°C

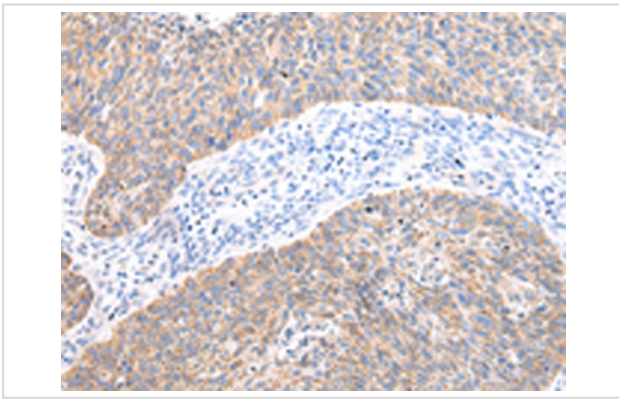
Application Details

Immunohistochemistry: 1:25-1:100

Images



Immunohistochemical analysis of paraffin-embedded Human liver cancer tissue using #43229 at dilution 1/30.



Immunohistochemical analysis of paraffin-embedded Human lung cancer tissue using #43229 at dilution 1/30.

Background

This gene encodes a cytoplasmic protein which contains a regulation of G-protein signaling (RGS) domain and a dishevelled and axin (DIX) domain. The encoded protein interacts with adenomatosis polyposis coli, catenin beta-1, glycogen synthase kinase 3 beta, protein phosphate 2, and itself. This protein functions as a negative regulator of the wingless-type MMTV integration site family, member 1 (WNT) signaling pathway and can induce apoptosis. The crystal structure of a portion of this protein, alone and in a complex with other proteins, has been resolved. Mutations in this gene have been associated with hepatocellular carcinoma, hepatoblastomas, ovarian endometrioid adenocarcinomas, and medullablastomas. Two transcript variants encoding distinct isoforms have been identified for this gene.

Note: This product is for in vitro research use only