

## BRMS1 Antibody

Catalog No: #43231

Orders: [order@signalwayantibody.com](mailto:order@signalwayantibody.com)Support: [tech@signalwayantibody.com](mailto:tech@signalwayantibody.com)

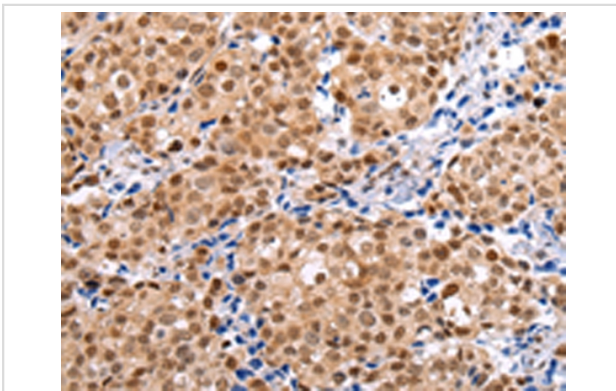
## Description

Product Name	BRMS1 Antibody
Host Species	Rabbit
Clonality	Polyclonal
Purification	Antigen affinity purification.
Applications	IHC
Species Reactivity	Hu
Specificity	The antibody detects endogenous levels of total BRMS1 protein.
Immunogen Type	peptide
Immunogen Description	Synthetic peptide of human BRMS1
Target Name	BRMS1
Other Names	breast cancer metastasis suppressor 1; Breast cancer metastasis-suppressor 1; BRMS1; DKFZp564A063
Accession No.	Swiss-Prot#: Q9HCU9 Gene ID: 25855
Uniprot	Q9HCU9
GeneID	25855;
Concentration	0.8mg/ml
Formulation	Rabbit IgG in pH7.4 PBS, 0.05% NaN <sub>3</sub> , 40% Glycerol.
Storage	Store at -20°C

## Application Details

Immunohistochemistry: 1:25-1:100

## Images



Immunohistochemical analysis of paraffin-embedded Human breast cancer tissue using #43231 at dilution 1/20,

## Background

This gene reduces the metastatic potential, but not the tumorigenicity, of human breast cancer and melanoma cell lines. The protein encoded by this gene localizes primarily to the nucleus and is a component of the mSin3a family of histone deacetylase complexes (HDAC). The protein contains two coiled-coil motifs and several imperfect leucine zipper motifs. Alternative splicing results in two transcript variants encoding different isoforms.

---

Note: This product is for in vitro research use only