

CDK8 Antibody

Catalog No: #43234

Orders: order@signalwayantibody.comSupport: tech@signalwayantibody.com

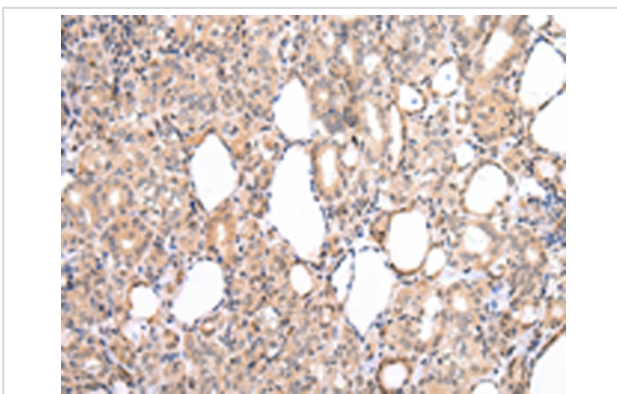
Description

Product Name	CDK8 Antibody
Host Species	Rabbit
Clonality	Polyclonal
Purification	Antigen affinity purification.
Applications	IHC
Species Reactivity	Hu Ms
Specificity	The antibody detects endogenous levels of total CDK8 protein.
Immunogen Type	peptide
Immunogen Description	Synthetic peptide of human CDK8
Target Name	CDK8
Other Names	K35
Accession No.	Swiss-Prot#: P49336 Gene ID: 1024
Uniprot	P49336
GeneID	1024;
Concentration	1mg/ml
Formulation	Rabbit IgG in pH7.4 PBS, 0.05% NaN ₃ , 40% Glycerol.
Storage	Store at -20°C

Application Details

Immunohistochemistry: 1:25-1:100

Images



Immunohistochemical analysis of paraffin-embedded Human thyroid cancer tissue using #43234 at dilution 1/20,

Background

The protein encoded by this gene is a member of the cyclin-dependent protein kinase (CDK) family. CDK family members are highly similar to the gene products of *Saccharomyces cerevisiae* *cdc28*, and *Schizosaccharomyces pombe* *cdc2*, and are known to be important regulators of cell cycle progression. This kinase and its regulatory subunit cyclin C are components of the RNA polymerase II holoenzyme complex, which phosphorylates the carboxy-terminal domain (CTD) of the largest subunit of RNA polymerase II. This kinase has also been shown to regulate transcription by targeting the

CDK7/cyclin H subunits of the general transcription initiation factor IIH (TFIIH), thus providing a link between the 'Mediator-like' protein complexes and the basal transcription machinery.?

Note: This product is for in vitro research use only