

CHRM5 Antibody

Catalog No: #43235

Orders: order@signalwayantibody.comSupport: tech@signalwayantibody.com

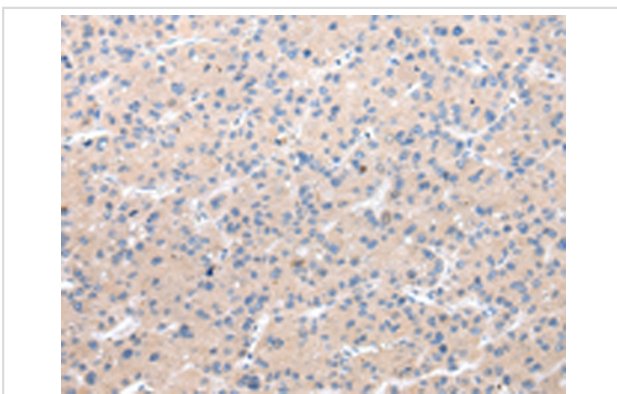
Description

Product Name	CHRM5 Antibody
Host Species	Rabbit
Clonality	Polyclonal
Purification	Antigen affinity purification.
Applications	IHC
Species Reactivity	Hu Ms Rt
Specificity	The antibody detects endogenous levels of total CHRM5 protein.
Immunogen Type	peptide
Immunogen Description	Synthetic peptide of human CHRM5
Target Name	CHRM5
Other Names	HM5
Accession No.	Swiss-Prot#: P08912 Gene ID: 1133
Uniprot	P08912
GeneID	1133;
Concentration	1.4mg/ml
Formulation	Rabbit IgG in pH7.4 PBS, 0.05% NaN ₃ , 40% Glycerol.
Storage	Store at -20°C

Application Details

Immunohistochemistry: 1:25-1:100

Images



Immunohistochemical analysis of paraffin-embedded Human liver cancer tissue using #43235 at dilution 1/20,

Background

The muscarinic cholinergic receptors belong to a larger family of G protein-coupled receptors. The functional diversity of these receptors is defined by the binding of acetylcholine and includes cellular responses such as adenylate cyclase inhibition, phosphoinositide degeneration, and potassium channel mediation. Muscarinic receptors influence many effects of acetylcholine in the central and peripheral nervous system. The clinical implications of this receptor are unknown; however, stimulation of this receptor is known to increase cyclic AMP levels.

Note: This product is for in vitro research use only