

PCDHA6 Antibody

Catalog No: #43241

Orders: order@signalwayantibody.comSupport: tech@signalwayantibody.com

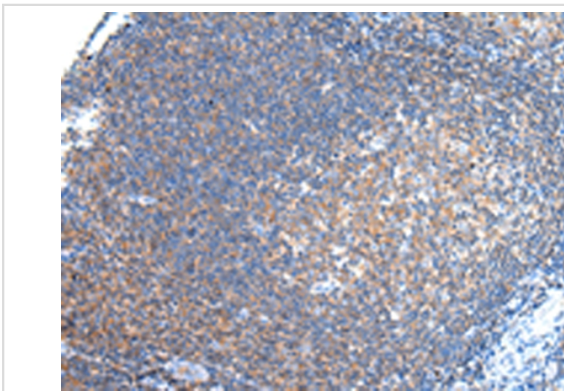
Description

Product Name	PCDHA6 Antibody
Host Species	Rabbit
Clonality	Polyclonal
Purification	Antigen affinity purification.
Applications	IHC
Species Reactivity	Hu
Specificity	The antibody detects endogenous levels of total PCDHA6 protein.
Immunogen Type	peptide
Immunogen Description	Synthetic peptide of human PCDHA6
Target Name	PCDHA6
Other Names	CNR2; CNRN2; CNRS2; CRNR2; PCDH-ALPHA6
Accession No.	Swiss-Prot#: Q9UN73 Gene ID: 56142
Uniprot	Q9UN73
GeneID	56142;
Concentration	0.8mg/ml
Formulation	Rabbit IgG in pH7.4 PBS, 0.05% NaN ₃ , 40% Glycerol.
Storage	Store at -20°C

Application Details

Immunohistochemistry: 1:30-1:150

Images



Immunohistochemical analysis of paraffin-embedded Human tonsil tissue using #43241 at dilution 1/20,

Background

This gene is a member of the protocadherin alpha gene cluster, one of three related gene clusters tandemly linked on chromosome five that demonstrate an unusual genomic organization similar to that of B-cell and T-cell receptor gene clusters. The alpha gene cluster is composed of 15 cadherin superfamily genes related to the mouse CNR genes and consists of 13 highly similar and 2 more distantly related coding sequences. The tandem array of 15 N-terminal exons, or variable exons, are followed by downstream C-terminal exons, or constant exons, which are shared by all

genes in the cluster. The large, uninterrupted N-terminal exons each encode six cadherin ectodomains while the C-terminal exons encode the cytoplasmic domain. These neural cadherin-like cell adhesion proteins are integral plasma membrane proteins that most likely play a critical role in the establishment and function of specific cell-cell connections in the brain. Alternative splicing has been observed and additional variants have been suggested but their full-length nature has yet to be determined.

Note: This product is for in vitro research use only