

FIGF Antibody

Catalog No: #43245

Orders: order@signalwayantibody.comSupport: tech@signalwayantibody.com

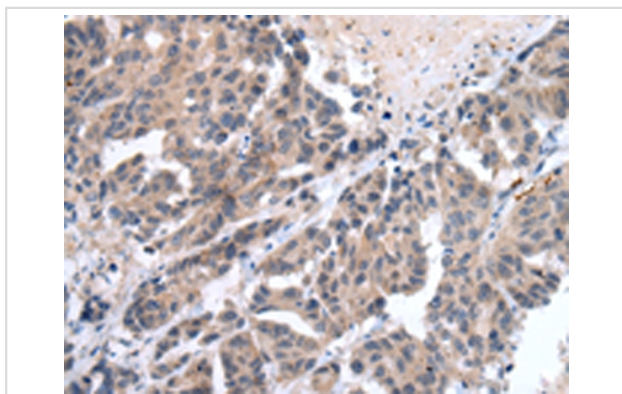
Description

Product Name	FIGF Antibody
Host Species	Rabbit
Clonality	Polyclonal
Purification	Antigen affinity purification.
Applications	IHC
Species Reactivity	Hu
Specificity	The antibody detects endogenous levels of total FIGF protein.
Immunogen Type	peptide
Immunogen Description	Synthetic peptide of human FIGF
Target Name	FIGF
Other Names	VEGFD; VEGF-D
Accession No.	Swiss-Prot#: O43915Gene ID: 2277
Uniprot	O43915
GeneID	2277;
Concentration	1mg/ml
Formulation	Rabbit IgG in pH7.4 PBS, 0.05% NaN ₃ , 40% Glycerol.
Storage	Store at -20°C

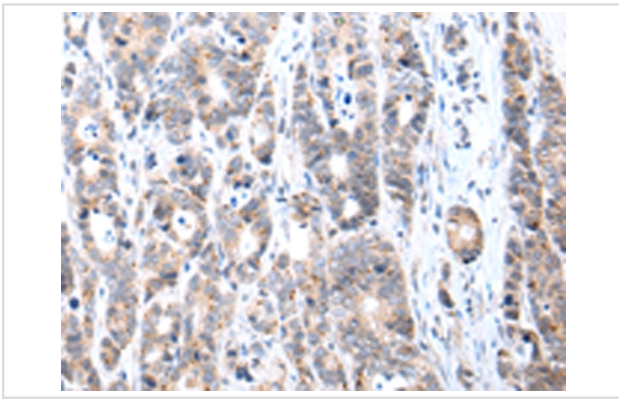
Application Details

Immunohistochemistry: 1:25-1:100

Images



Immunohistochemical analysis of paraffin-embedded Human breast cancer tissue using #43245 at dilution 1/20.



Immunohistochemical analysis of paraffin-embedded Human gastric cancer tissue using #43245 at dilution 1/20.

Background

The protein encoded by this gene is a member of the platelet-derived growth factor/vascular endothelial growth factor (PDGF/VEGF) family and is active in angiogenesis, lymphangiogenesis, and endothelial cell growth. This secreted protein undergoes a complex proteolytic maturation, generating multiple processed forms which bind and activate VEGFR-2 and VEGFR-3 receptors. This protein is structurally and functionally similar to vascular endothelial growth factor C. Read-through transcription has been observed between this locus and the upstream PIR (GeneID 8544) locus.

Note: This product is for in vitro research use only